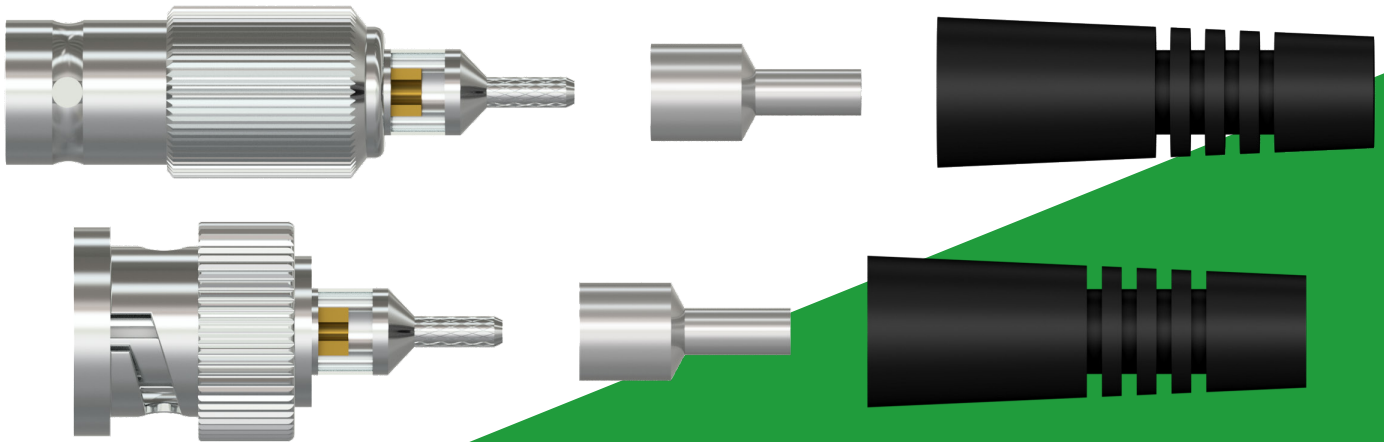




**TEST & MEASUREMENT PRODUCTS**



## **BNC Jack and Plug Connector Kits Product Manual**

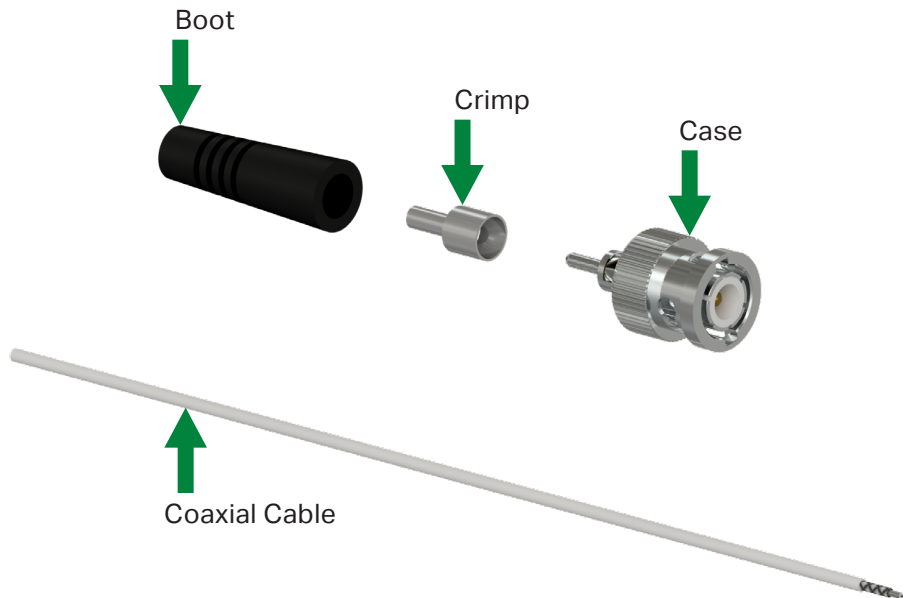
**TABLE OF CONTENTS**

- Introduction.....3
- Assembly .....5
- Maintenance .....9
- Warranty & Return Information .....9

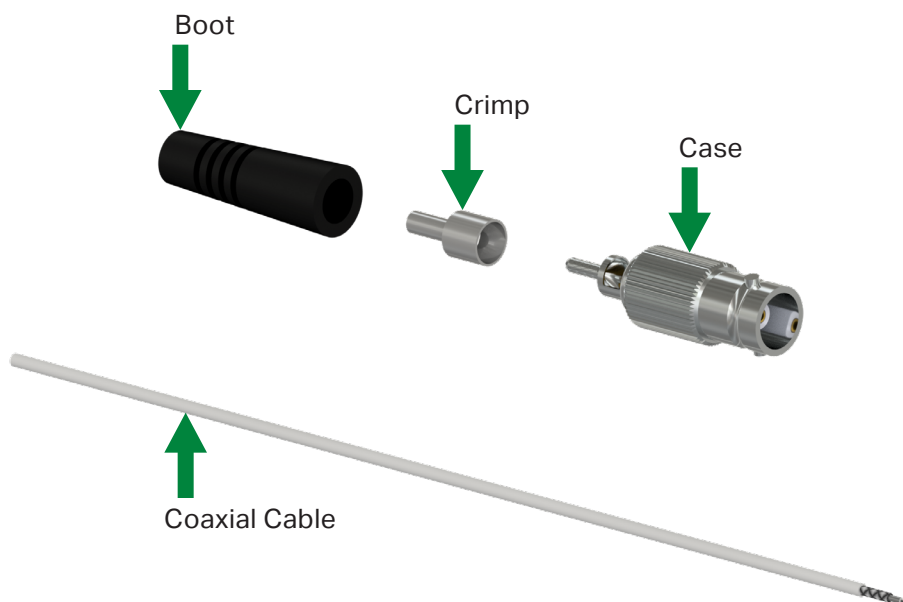


## INTRODUCTION



This document contains information on the operation, assembly, and maintenance of the CKT-EC and CKT-FC connector kits. This manual is an overview of the system and references the specific component manuals. User manuals are provided with the system for all configurable internal components.



**Figure 1. CKT-EC BNC Jack Connector Kit Materials**



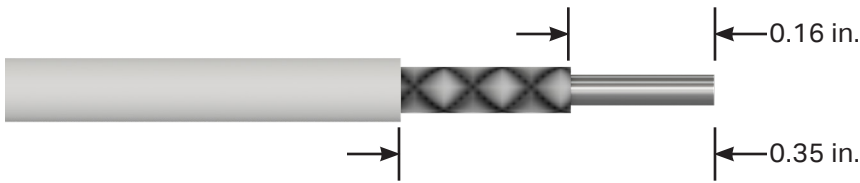
**Figure 2. CKT-FC BNC Plug Connector Kit Materials**

Part #	Connector Kit Parts	Max Temp.	Max Cable Diameter	Connector Kit Parts #	Compatible Cables
EC	 BNC Jack Connector Kit	392 °F (200 °C)	0.072 in. (1,8 mm)	CKT-EC-07	TMC01 TMC03
			0.101 in. (2,6 mm)	CKT-EC-101	TMC02
FC	 BNC Plug Connector Kit	392 °F (200 °C)	0.072 in. (1,8 mm)	CKT-FC-07	TMC01 TMC03
			0.101 in. (2,6 mm)	CKT-FC-101	TMC02

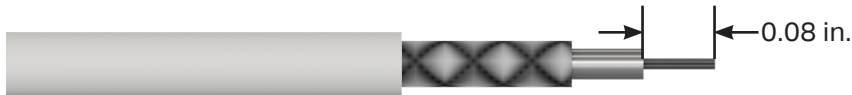
**Figure 1. Product Selection Guide**

## ASSEMBLY FOR CKT-EC

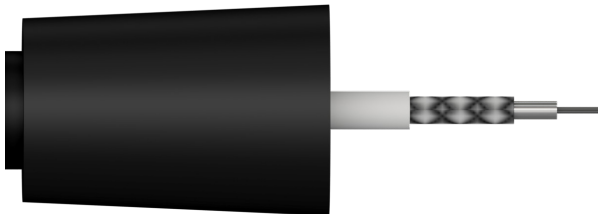
1. Strip outer jacket of wire 0.35 in. and shield 0.16 in.



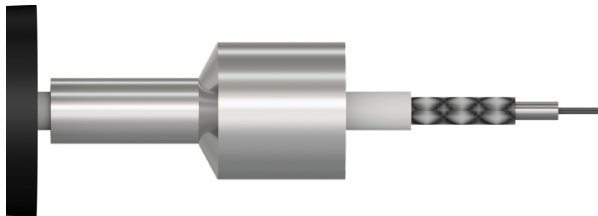
2. Strip inner conductor 0.08 in.



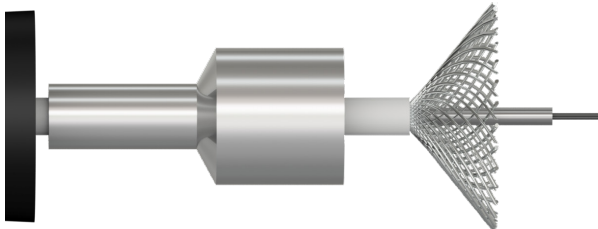
3. Slide the boot onto the cable.



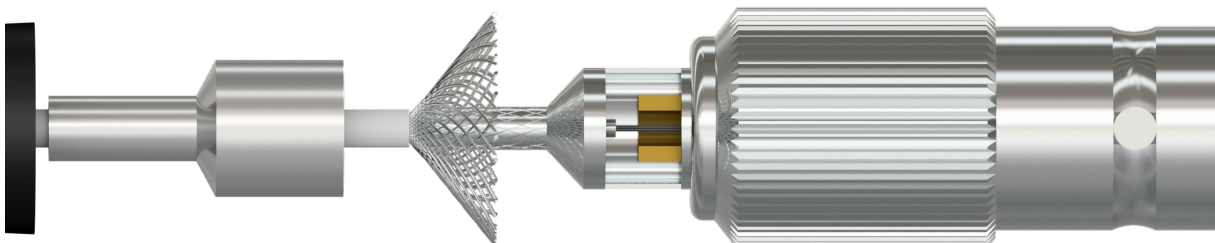
4. Slide the crimp onto the cable, with the larger portion facing the prepared end.



5. Fan out the shielding.

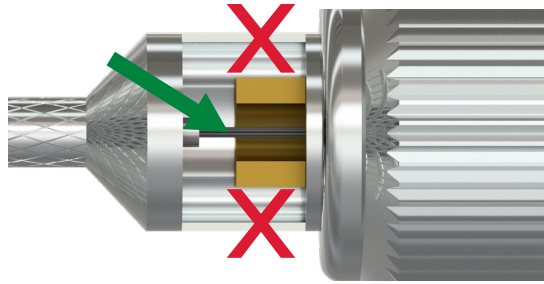


6. Insert conductor into the connector so that the inner conductor rests on the tray.

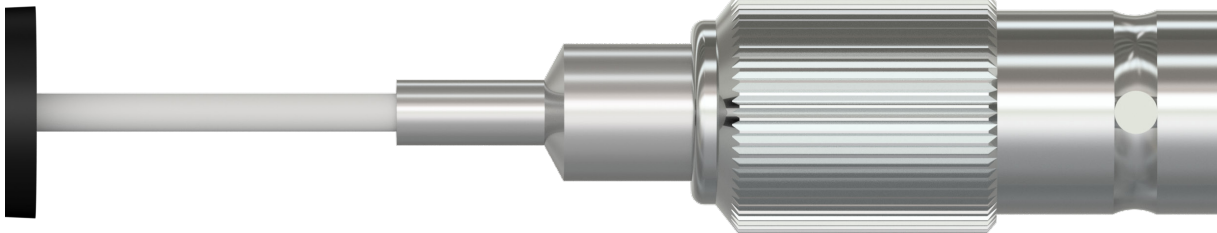


7. Use a small amount of solder to connect the cable's inner conductor to the socket.

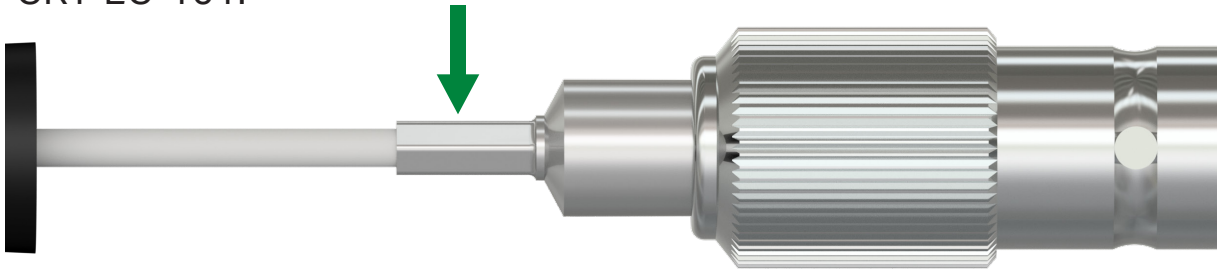
**Do not allow the solder to bridge to the outer casing.**



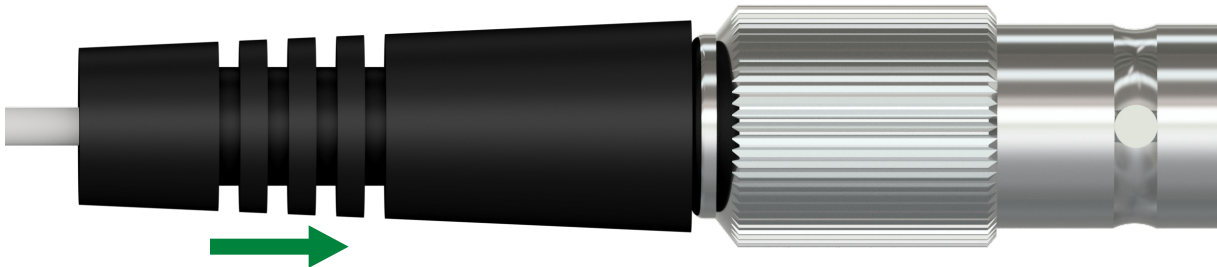
8. Slide the crimp up to the locking ring.



9. Crimp with a 0.078 in. hex crimp for CKT-EC-07 or a 0.128 in. hex crimp for CKT-EC-101.

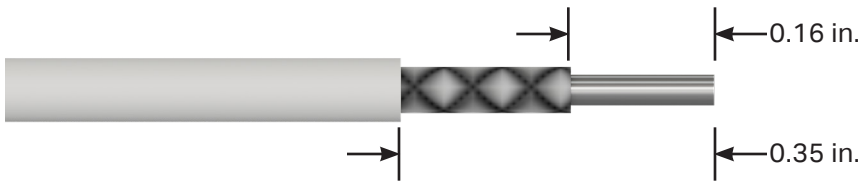


10. Slide the boot up onto the locking ring.

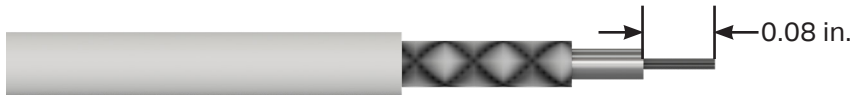


## ASSEMBLY FOR CKT-FC

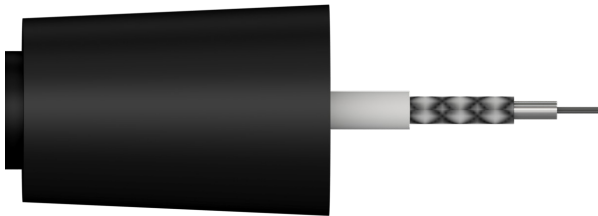
1. Strip outer jacket of wire 0.35 in. and shield 0.16 in.



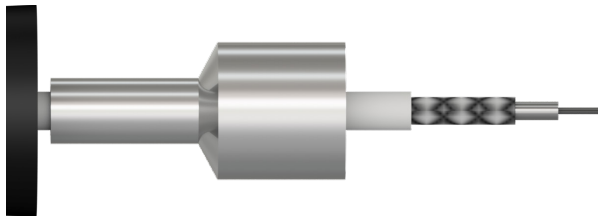
2. Strip inner conductor 0.08 in.



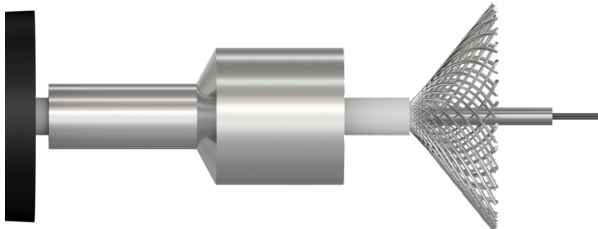
3. Slide the boot onto the cable.



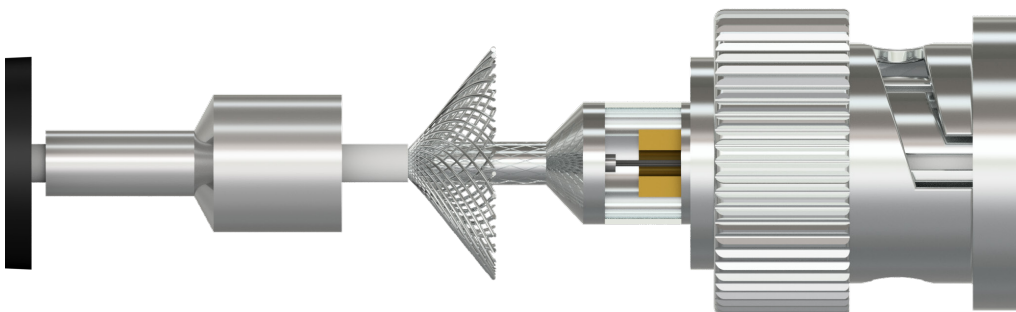
4. Slide the crimp onto the cable, with the larger portion facing the prepared end.



5. Fan out the shielding.

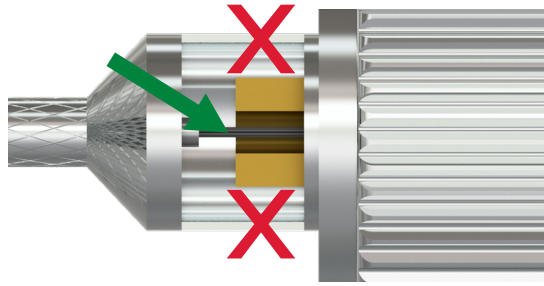


6. Insert conductor into the connector so that the inner conductor rests on the tray.

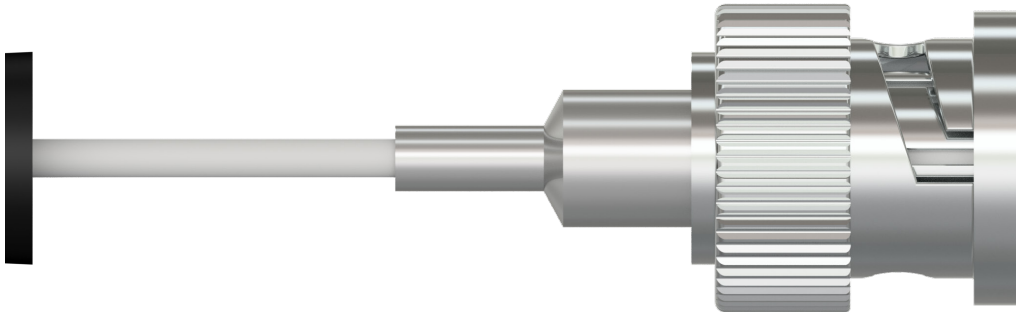


7. Use a small amount of solder to connect the cable's inner conductor to the socket.

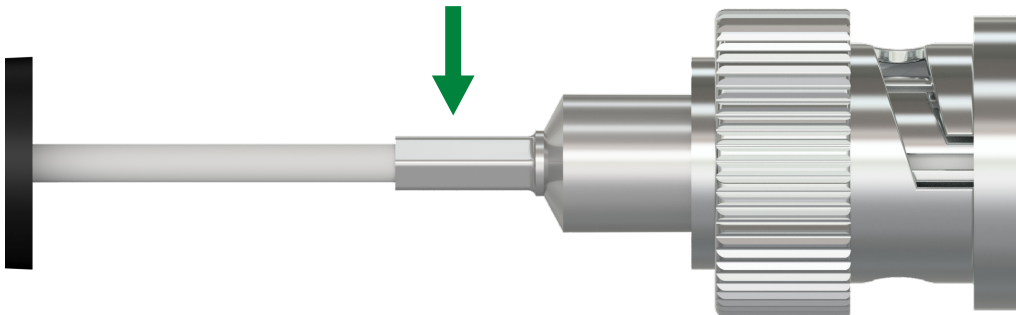
**Do not allow the solder to bridge to the outer casing.**



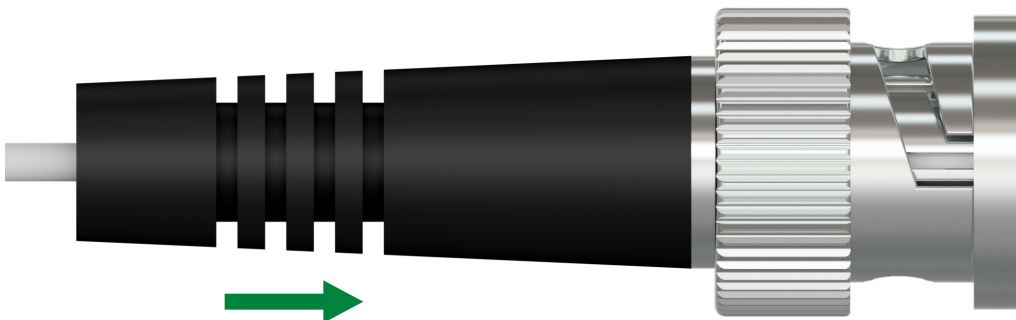
8. Slide the crimp up to the locking ring.



9. Crimp with a 0.078 in. hex crimp for CKT-FC-07 or a 0.128 in. hex crimp for CKT-FC-101.



10. Slide the boot up onto the locking ring.





## **MAINTENANCE**

Once the (product) has been installed, minimal maintenance will be required. Basic visual checks to ensure integrity should be made periodically.

### **General**

There are no customer-replaceable parts. The product has been designed for trouble-free service under normal operating conditions.

## **WARRANTY & REFUND**

Please visit [www.ctconline.com](http://www.ctconline.com) to view a complete recapitulation of our warranty and refund policies.

## **CONTACT INFORMATION**

Connection Technology Center, Inc. (CTC)

7939 Rae Blvd.

Victor, NY 14564

1.585.924.5900

[sales@ctconline.com](mailto:sales@ctconline.com)

[www.ctconline.com](http://www.ctconline.com)

