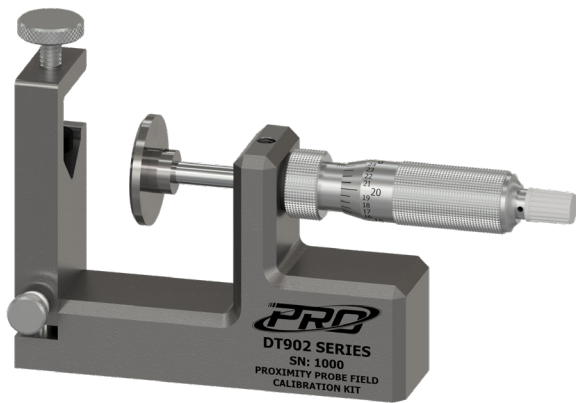


DT902

Linear Field Calibration Kit

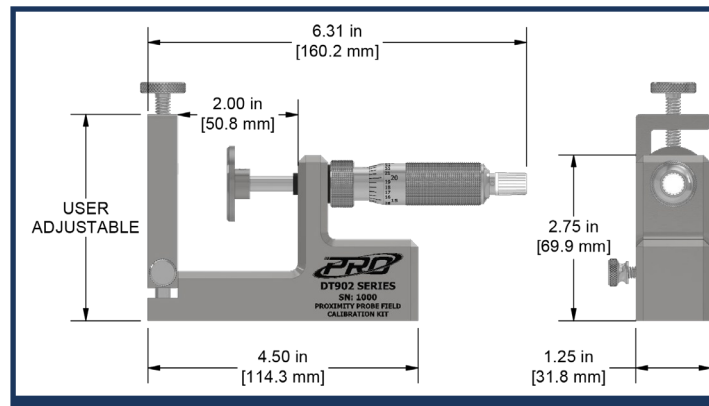


Product Features

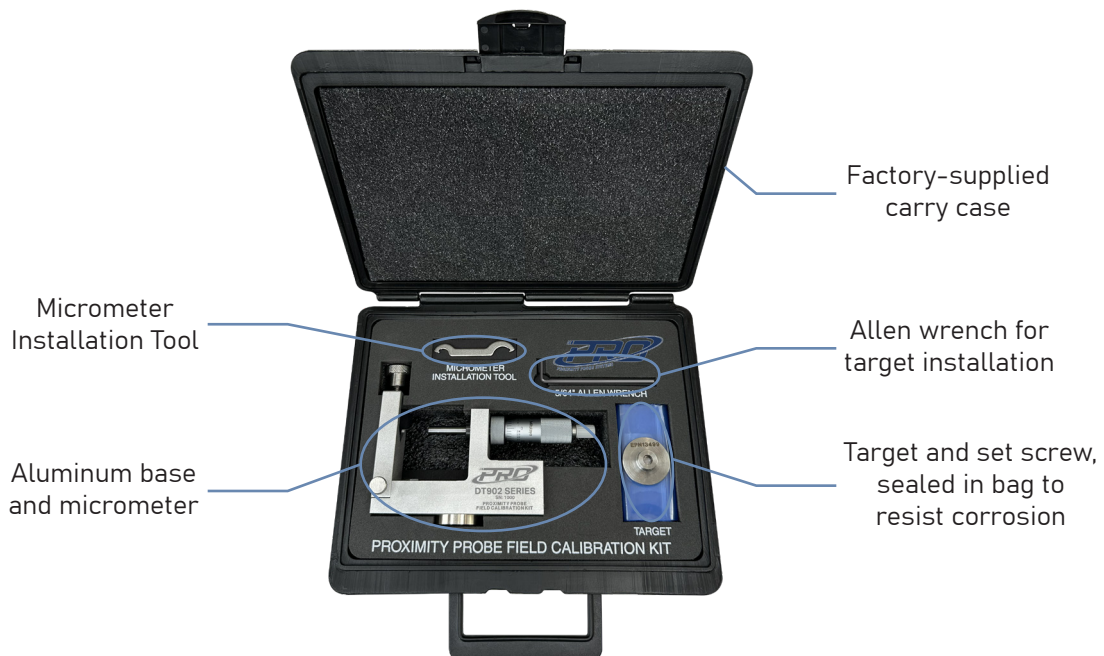
Verify Proximity Probe calibrations with the flexibility of shop or field use

This portable linear calibration unit is usable for standard probe sizes, including FFv™, 8, or 11 mm casings.

- User selectable probe target material
- Ratcheting adjustments for increased accuracy
- Features magnetic mounting base to securely mount to securely mount to work bench
- Height adjustable probe mounting bracket to accomodate FFv™, 8 mm, or 11 mm probes



Components

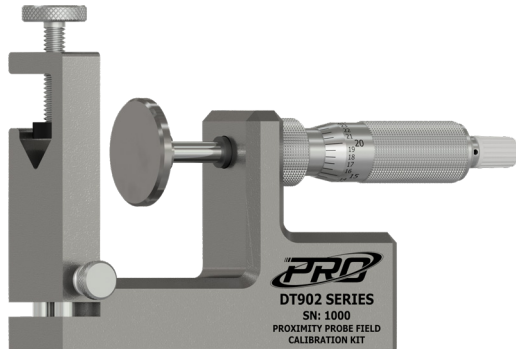


DT902

Linear Field Calibration Kit



Ordering Information



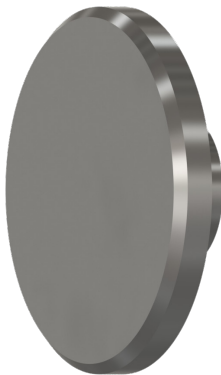
DT902 –

--	--	--

Target Material

- 100 = 4140 Steel
- 108 = 1045 Carbon Steel
- 110 = 17-4 PH Stainless Steel
- 111 = 420 Stainless Steel
- 112 = 304 Stainless Steel
- 113 = 316L Stainless Steel
- 120 = 360 Brass
- 130 = 7075 Aluminum
- 140 = Nickel-plated Steel
- 150 = 410 Stainless Steel

Replacement Targets



DT906 –

--	--	--

Target Material

- 100 = 4140 Steel
- 108 = 1045 Carbon Steel
- 110 = 17-4 PH Stainless Steel
- 111 = 420 Stainless Steel
- 112 = 304 Stainless Steel
- 113 = 316L Stainless Steel
- 120 = 360 Brass Alloy
- 130 = 7075-T6 Aluminum
- 140 = Nickel-plated Steel
- 150 = 410 Stainless Steel