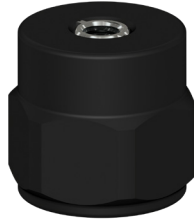


MH170-1A

Accelerometer Mounting Pad for High Temperature Dissipation and Electrical Isolation, 1/4-28 Tapped Sensor Mounting Hole, 1/4-28 Mounting Stud



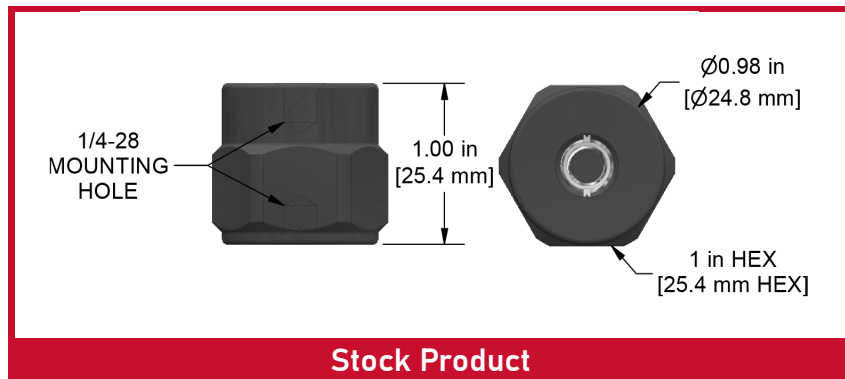
Product Features

Electrical Isolation $\geq 10\text{kv DC}$

Heat Isolation Performance:
Effectively dissipates $169\text{ }^\circ\text{C}$ ($336.2\text{ }^\circ\text{F}$)
between machine surface and
mounted sensor

*Based on controlled testing using a $250\text{ }^\circ\text{C}$ hot plate
for 10 hours at $21\text{ }^\circ\text{C}$ ambient conditions*

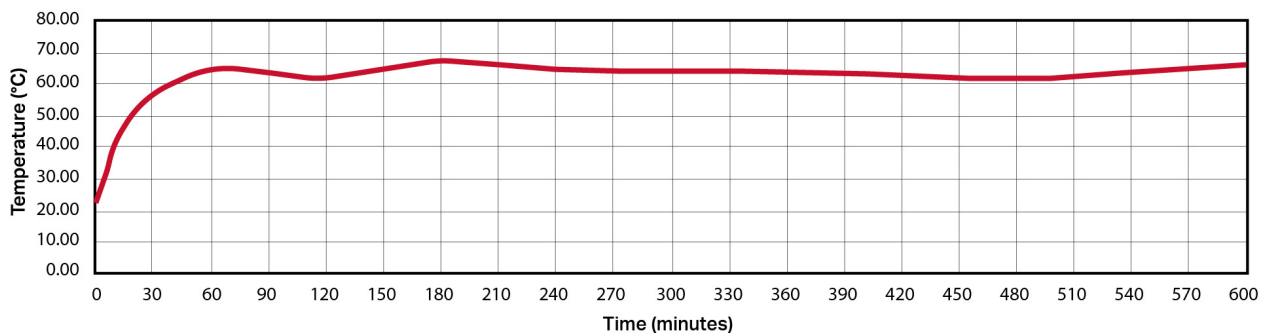
Acts as a Mechanical Low Pass Filter:
Accurately passes frequencies up to
 $2,300\text{ Hz}$ (+3dB)



Specifications

Maximum Temperature	250 °C (480 °F)
Case Material	Specialty Engineered Resin
Sensor Mounting	Stainless Steel 1/4-28 Blind Tapped Hole
Field Mounting	Stainless Steel 1/4-28 Mounting Stud

Surface Temperature vs. Time



At room temperature ($21\text{ }^\circ\text{C}$ [$70\text{ }^\circ\text{F}$]) the mounting pad was placed on a hot plate at $250\text{ }^\circ\text{C}$ ($482\text{ }^\circ\text{F}$) with the top surface temperature reaching a maximum of $67\text{ }^\circ\text{C}$ ($153\text{ }^\circ\text{F}$) over the course of 10 hours.