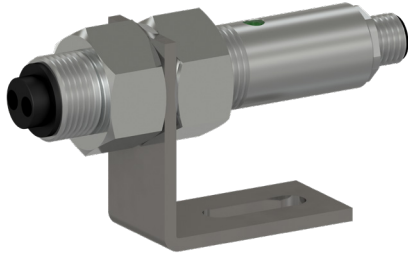


# LS100-M12A

Optical Laser Sensor for Measuring Shaft Rotational Speed



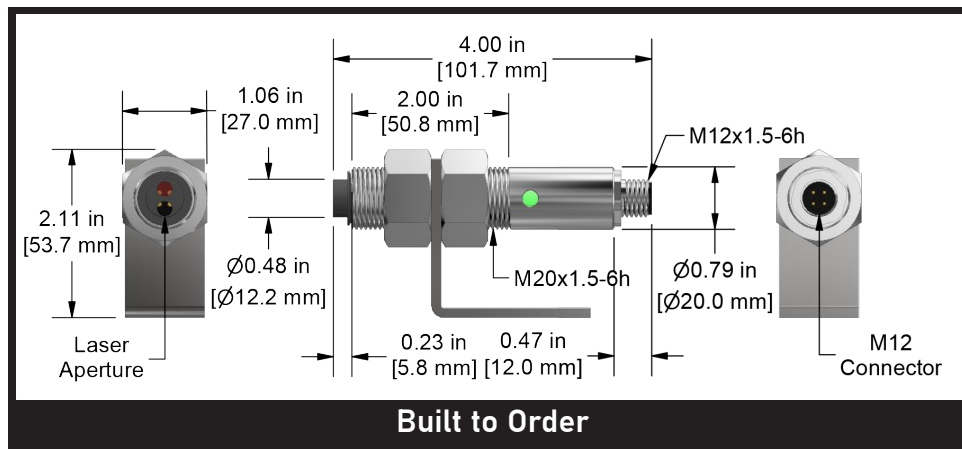
VIBRATION ANALYSIS HARDWARE



## Product Features

Remote Optical Laser Sensor includes mounting bracket with jam nuts, and 12 in. [305 mm] of T-5 Reflective Tape

Compatible with CTC M4T Connector



## Component Specifications

<b>Speed Range</b>	1-250,000 RPM	<b>On-Target Indicator</b>	Green LED on tube body – active when pulse present
<b>Illumination</b>	Visible Red Laser	<b>Operating Range</b>	Up to 25 ft. [7.6 m] and 60 degrees offset from the target
<b>Laser Classification</b>	Class 2 (per IEC 60825-1:2014) This product complies with IEC60825-1 Ed. 3 and 21 CFR 1040.10 and 1040.11 except for deviations pursuant to Laser Notice No. 50 of June 2007.	<b>Power Requirement</b>	10-24 V dc ±20% 0.5 W
<b>Max Laser Output</b>	1 mW max	<b>Output – Standard</b>	Open collector with an internal pull-up resistor (5600 ohms) to supply voltage; positive pulse when target is present
<b>Pulse Duration</b>	Continuous	<b>Connection</b>	4 pin M12 connector
<b>Laser Wavelength</b>	650nm (visible red)	<b>Material</b>	Tube: 316L stainless steel Nosepiece: ABS
<b>Beam Divergence</b>	<18 mrad	<b>Dimensions</b>	4 in. [101.7 mm] L x 0.787 in. [20 mm] OD
<b>Beam Diameter</b>	4 x 7 mm typical at 2 m		
<b>Laser Diode Life</b>	8,000 operating hours MTBF		