



CONNECTION TECHNOLOGY CENTER, INC.



SHORT FORM CATALOG | Q2 2026

# TABLE OF CONTENTS

About CTC .....	3
Connect Line Wireless Solutions.....	4
Multipurpose Accelerometers .....	5
Specialty Accelerometers .....	6
Fully-Molded Accelerometers.....	7
Hazardous-Rated Accelerometers.....	8
Multi-Axial Accelerometers.....	9
Speed Sensors .....	10
Cables .....	11
Connectors .....	12
Data Collector Cordsets.....	13
Emerson / CSI Equivalent and Compatible Hardware .....	14
Popular Cable Adapters.....	15
Junction Boxes .....	16
Mounting Hardware .....	18
AMP Line 4-20 mA Continuous Health Monitoring Hardware.....	21
PRO Line Proximity Probe Systems .....	23
TMP Line Test and Measurement Products .....	24



Scan here to view the digital version of our Short Form Catalog



## Who We Are

At CTC, we are a family-owned and operated business passionate about providing the highest quality products backed by excellent customer service. We are the industry leader in quick delivery for stock and built-to-order products, and all CTC products are proudly made or assembled in the U.S.A.

## What We Do

CTC is the world leader in the design and manufacture of vibration analysis hardware. We serve the industrial condition monitoring market with a comprehensive portfolio of industrial accelerometers, piezo velocity transducers, 4-20 mA vibration sensors, and proximity probes as well as all related mounting hardware, cabling, and junction boxes.

Our products enable efficient vibration monitoring for predictive maintenance in a wide variety of industries. Industries served include cement, mining, petrochemical, food and beverage, auto, steel, wind, paper, power generation, water and wastewater treatment, pharmaceutical, hospitals, bottling, and more.

We also serve the research and development market with our top-of-the-line series of test and measurement accelerometers and related accessories designed for use in laboratory environments. Our mission is to offer the most extensive collection of accelerometers and vibration analysis hardware products, as well as the tools for installation. Our products are compatible with multiple third-party data collectors and online monitoring systems.

## Product Offerings

At CTC, we offer comprehensive product lines to meet your vibration monitoring needs. Our products reflect the input of customers and distributors from around the world and are designed and tested to meet the real-world demands of plant environments. We believe our products are the highest quality on the market, which is why we back each product line with industry-leading warranties.

## Benefits of Monitoring with CTC Hardware



**Improve  
safety**



**Measure  
inaccessible  
areas**



**Limit  
unwanted  
downtime**



**Affordable  
prices**



**Industry  
leading  
warranties**

# CONNECT LINE WIRELESS SOLUTIONS

CTC Connect is a line of Bluetooth™ wireless condition monitoring solutions for dynamic vibration signal or overall vibration signal with digital data transmission. The CTC Connect ecosystem offers you the highest quality wireless hardware on the market and is designed for integration with 3<sup>rd</sup>-party vibration analysis software.

## ConnectSens™ Wireless Sensors

ConnectSens wireless sensors feature user-replaceable 3.6 V Lithium Thionyl Chloride primary battery and offer up to 4 years of unattended operation.



**WS100**

Triaxial overall vibration signal with temperature output



**WS200**

Single axis dynamic vibration signal capture with temperature output



**WS300**

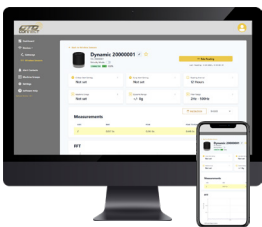
Triaxial dynamic vibration signal capture with temperature output

## ACCESS2000 Long-Range Wireless Gateway



The ACCESS2000 is a long-range wireless gateway and network controller used for connecting CTC Connect compatible products to the data analysis software of your choice via Wi-Fi or Ethernet. The ACCESS2000 comes preloaded with the ConnectView Web App and receives data from CTC Connect devices and facilitates bi-directional transfer of data. For your convenience, the ACCESS2000 Series supports WebSocket, MQTT IoT, and Modbus protocols. The ABS plastic, IP66-rated enclosure also offers a wide temperature range of -40 °C to 65 °C (-40 °F to 149 °F) to provide reliability in demanding environments.

## ConnectView™ Web App



The complimentary ConnectView Web App is a user-friendly platform that comes preloaded on Connect Wireless Gateways. The web app offers basic vibration tools and device management functionality like sensor configuration (WS200 and WS300 only), battery level information, and more. The web app is designed for use with 3<sup>rd</sup>-party vibration analysis software for advanced data analysis that meets your specific needs.

The Bluetooth™ word mark and logos are registered trademarks owned by Bluetooth SIG, Inc. and any use of such marks by Connection Technology Center, Inc. (CTC) is under license. Other trademarks and trade names are those of their respective owners.



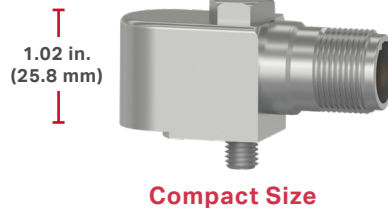
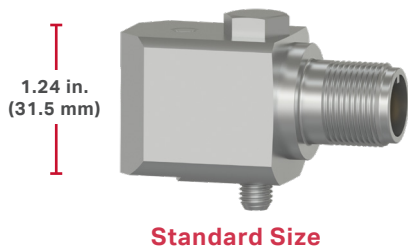
# MULTIPURPOSE ACCELEROMETER STYLES

CTC offers a complete line of industrial accelerometers. Our ruggedized industrial accelerometers are available in single axis, biaxial, and triaxial designs. Many configurations allow for either top or side exit options. Side exit configurations are suitable for installations in areas where height is an issue. CTC's industrial accelerometers support a diverse set of applications with sensitivity values ranging from 10 mV/g to 1000 mV/g. Dual output configurations allow for vibration and temperature outputs.

## Top Exit Multipurpose Accelerometer Size Options



## Side Exit Multipurpose Accelerometer Size Options



## Multipurpose Accelerometer Integral Cable Options



# SPECIALTY ACCELEROMETERS

## Ultrasound Sensors

Dynamic IEPE vibration and ultrasound accelerometers with high amplitude resonance peak for stress wave measurements.



**UEB332**

100 mV/g,  
±10% sensitivity tolerance,  
resonant frequency:  
42 kHz ±2 kHz



**UEA332**

100 mV/g,  
±10% sensitivity tolerance,  
resonant frequency:  
42 kHz ±2 kHz



**UEB334**

Low cost, 100 mV/g,  
±15% sensitivity tolerance,  
resonant frequency:  
42 kHz ±2 kHz



**UEA334**

Low cost, 100 mV/g,  
±15% sensitivity tolerance,  
resonant frequency:  
42 kHz ±2 kHz

## High Temperature Resistant Accelerometers



**AC207 and AC208**

100 mV/g,  
±10% sensitivity tolerance,  
max temp: 325 °F (162 °C)



**TXEA331-HT**

Premium, 100 mV/g,  
±5% sensitivity tolerance,  
triaxial sensor,  
max temp: 325 °F (162 °C)



**TR207-M12 and TR208-M12**

100 mV/g,  
±10% sensitivity tolerance,  
RTD sensors,  
max temp: 325 °F (162 °C)

## Dual Output Temperature and Acceleration Sensors



**TA202**

100 mV/g, 10 mV/°C,  
±10% sensitivity tolerance,  
temp range:  
-40 to 250 °F  
(-40 to 121 °C)



**TA204**

100 mV/g, 10 mV/°C,  
±10% sensitivity tolerance,  
temp range:  
-40 to 250 °F  
(-40 to 121 °C)



**TR102-M12A**

100 mV/g,  
±10% sensitivity tolerance,  
PT100 RTD,  
temp range:  
-40 to 250 °F  
(-40 to 121 °C)



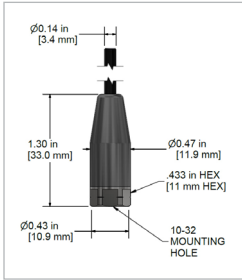
**TR104-M12A**

100 mV/g,  
±10% sensitivity tolerance,  
PT100 RTD,  
temp range:  
-40 to 250 °F  
(-40 to 121 °C)



# FULLY-MOLDED ACCELEROMETERS

## Cost-Effective Molded Accelerometers



These lightweight, miniature sensors are ideal for applications with limited clearance, limited mounting surface space, or submersible applications. The minimal form factor and excellent frequency response allow this sensor to be used in a wide variety of applications.



**MCB211**  
High Frequency,  
10 mV/g,  
±10% sensitivity tolerance

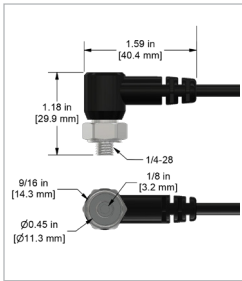


**MEB210**  
100 mV/g,  
±10% sensitivity tolerance



**MEB211**  
High Frequency,  
100 mV/g,  
±10% sensitivity tolerance

## Low-Profile Molded Accelerometers



CTC's innovative solution for space-constrained applications requiring permanent mounting, our low-profile molded accelerometers feature an integrated rotating mounting base for easy sensor positioning.



**MEB360**  
Premium,  
100 mV/g,  
±5% sensitivity tolerance



**MEB361**  
Low cost,  
100 mV/g,  
±15% sensitivity tolerance



**MCB360**  
Premium,  
10 mV/g,  
±5% sensitivity tolerance



**MCB361**  
Low cost,  
10 mV/g,  
±15% sensitivity tolerance

# HAZARDOUS-RATED ACCELEROMETERS

CTC offers a wide array of single-axis, biaxial, dual output, and triaxial accelerometers in a variety of sizes and connector styles. Designed to withstand harsh environments and prevent arcing and sparking, we offer sensors with the following approvals:

## ANZEx

**ANZEx Zone 0, 1**



**KC Zone 0, 1**



**ATEX Zone 0, 1**

**ATEX Zone 2**

## IECEx

**IECEx Zone 0, 1**

**IECEx Zone 2**



**CSA Class I Div 1, Class II Div 1, Class III**

**CSA Class I Div 2, Class II Div 1, Class III**

### Sensor Type Options

- » Single axis accelerometers
- » Biaxial accelerometers
- » Triaxial accelerometers
- » Dual output sensors (acceleration + temperature)
- » Loop power sensors
- » Piezo velocity sensors

### Connection Options

- » Standard MIL style connector
- » Mini-MIL style connector
- » Molded integral cable
- » Armor jacketed integral cable

### Sensor Size Options

- » Standard top exit
- » Standard side exit
- » Miniature top exit
- » Miniature side exit



# MULTI-AXIAL ACCELEROMETERS

## Dual Output Triaxial Accelerometers



**TXEA331-TA**  
Premium,  
acceleration and  
temperature output,  
100 mV/g, 10 mV/°C,  
±5% sensitivity tolerance



**TXEA331-VT**  
Premium,  
piezo velocity and  
temperature output,  
100 mV/in/sec, 10 mV/°C,  
±5% sensitivity tolerance



**TXFA331-TA**  
Premium,  
acceleration and  
temperature output,  
500 mV/g, 10 mV/°C,  
±5% sensitivity tolerance



**TXFA331-VT**  
Premium,  
piezo velocity and  
temperature output,  
500 mV/in/sec, 10 mV/°C,  
±5% sensitivity tolerance

## Other Popular Triaxial Accelerometers



**AC115**  
Low cost,  
100 mV/g,  
±15% sensitivity tolerance



**TREA330**  
Premium,  
miniature size,  
100 mV/g,  
±5% sensitivity tolerance



**TCEB331**  
Premium, miniature size,  
circular shape,  
100 mV/g,  
±5% sensitivity tolerance



**TXFA331**  
Premium,  
low frequency,  
500 mV/g,  
±5% sensitivity tolerance

## Popular Biaxial Accelerometers



**AC119**  
Low cost,  
X and Z axes,  
100 mV/g,  
±15% sensitivity tolerance

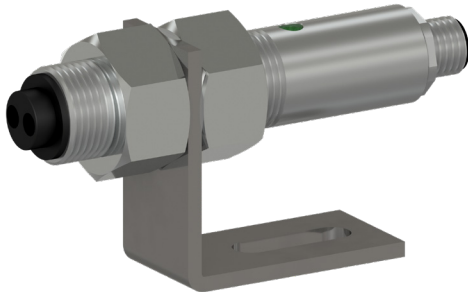


**AC979**  
Nonincendive,  
intrinsically safe,  
X and Z axes,  
100 mV/g,  
±10% sensitivity tolerance

## Shaft Speed Sensors

CTC offers the rugged and reliable LS100-M12A optical laser shaft speed sensor, designed to withstand harsh industrial environments. With an operating range of up to 25 ft. (7.6 m), the LS100-M12A is ideal for applications where close proximity isn't convenient or safe.

While optical speed sensors require atmospheres that are clean and free of mist, steam, dirt, oil, and other contaminants in order to function properly, there are times when contamination can occur accidentally. With the LS100-M12A, just clean off the laser and detector windows and your sensor is up and running again.



**LS100-M12A**

Optical laser sensor with visible red laser and green LED on-target indicator light, 4 pin M12 connector, speed range: 1-250,000 RPM



**M4T**

5 socket M12, polycarbonate molded connector, for use with LS100-M12A, permanent mount

## Inductive Proximity Sensors

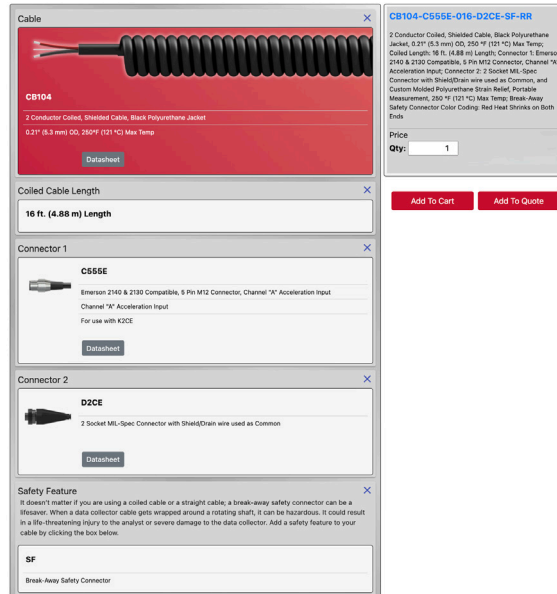
CTC offers the IN100 inductive proximity sensor for shaft rotational speed measurements. This rugged, 3-wire probe style inductive sensor can be used up to 0.15 in. (4 mm) from a 0.5 in. (12 mm) metallic target, such as a bolt head or shaft locking key. LED on-target indicator light helps ensure accurate and reliable data collection.



**IN100**

Inductive proximity sensors for rotating shaft speed measurements, maximum speed: 24,000 RPM

CTC offers a variety of the industry's most durable and reliable cable options for all applications and environmental criteria. Our proprietary Custom Cable Wizard application allows you to quickly and easily build cable assemblies to your exact specifications. The built-in logic takes the guesswork out of building your cable by preventing you from making incorrect and incompatible selections.



## Jacket Options

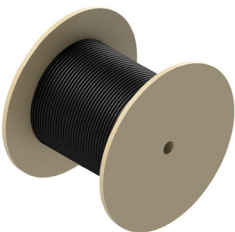
- » Fluorinated Ethylene Propylene (FEP)
- » Polyurethane
- » Lightweight Polyurethane
- » PVC
- » Thermoplastic Elastomer (TPE)
- » Low Smoke Zero Halogen

## Armor Options

- » Stainless steel braided sheathing
- » Stainless steel armor
- » Hydraulic hose armor

## Low Cost Cable Reels

- » Our most popular cables are available in bulk 1,000 ft. reels



## Conductor Options

- » 2 conductor
- » 3 conductor
- » 4 conductor
- » 6 conductor

## Hazardous Zone Options

- » Class 1, Division 2 approved

# CONNECTORS

CTC offers a variety of standard and specialty connectors for every possible application. CTC sensor connectors support temperatures ranging from -58 to 325 °F (-58 to 162 °C) and IP (ingress protection) ranging from IP66 to IP69.

## A Series: MIL Style (C-5015) Compatible Connectors



### Connector Options

- » Straight or right angle connectors
- » Hydraulic hose sleeve available
- » 2 and 3 live socket configurations available

### Material Options

- » Polycarbonate
- » Polyurethane
- » Nylon
- » PPS

## J Series: Mini-MIL Style Connectors



### Connector Options

- » Straight connector
- » Strain relief available
- » Grounded backshell
- » 2 and 4 live socket configurations available

### Material Options

- » Polycarbonate
- » Polyurethane
- » PPS
- » Nylon
- » Viton™

## K Series: MIL Style (C-5015) Compatible Connectors



### Connector Options

- » Straight connector
- » Strain relief
- » Grounded backshell
- » 2 and 3 live socket configurations available

### Material Options

- » Polyurethane

## M Series: M12 Molded Connectors



### Connector Options

- » Straight connector
- » Strain relief available
- » 2, 3, 4 and 5 live socket configurations available

### Material Options

- » Polycarbonate
- » Polyurethane
- » PPS
- » Nylon

## V Series: Viton™ Protective Boot Connectors



### Connector Options

- » Straight connector
- » 2, 3, and 4 live socket configurations available

### Material Options

- » Viton™ seal with nylon insert
- » Viton™ seal with PPS insert



# DATA COLLECTOR CORDSETS

CTC offers a variety of OEM replacement data collector cables and portable cable options for all major vibration analyzer manufacturers. Data collector cables are available in both coiled and straight cable options. Replacement cable assemblies and adapters are available for every major data collector, including:

**ACOEM, ADASH Ltd., AES Reliability, Azima / Symphony Industrial AI, BETAVIB, Bently Nevada / Baker Hughes / Commtest, CEMB, Emerson / CSI, Entek / Rockwell, iDear, Pruftechnik, SDT, SEMAPI, SKF, SPM, and Windrock**

## Popular Data Collector Connectors



**Emerson / CSI  
C55**

Channel A acceleration input to Emerson 2130 and 2140 data collectors



**ACOEM  
C494**

Single channel acceleration input for Faclon data collectors



**Bently Nevada / Baker Hughes / Commtest  
C416**

Triaxial acceleration input (X, Y and Z) for VB Series data collectors



**Entek / Rockwell  
C22**

Single channel acceleration input for dataPAC data collectors



**Pruftechnik  
C618**

Single channel IEPE acceleration input for VIBxpert II data collectors



**SKF / Azima / Symphony Industrial AI  
C66**

Single channel acceleration input for CMXA and DLI / DCA Series data collectors



**Emerson / CSI  
C585**

Single channel voltage input for Emerson 2140 data collectors



**Pruftechnik  
C617**

7 pin LEMO® connector for current line drive sensors, for VIBxpert II data collectors



**Bently Nevada / Baker Hughes / Commtest  
C641**

Dual keyway 4 pin LEMO® connector, Triaxial acceleration input (X, Y and Z), for Scout data collectors

# EMERSON / CSI EQUIVALENT AND COMPATIBLE HARDWARE

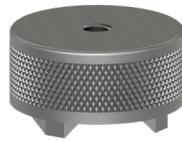
CTC is proud to offer a wide selection of the industry's highest quality vibration analysis hardware that is compatible with Emerson / CSI's broad range of data collectors.

## Available Product Types



### Accelerometers

Equivalent and compatible offerings



### Mounting Hardware

Compatible offerings



### Cable Adapters

Equivalent and compatible offerings



### Data Collector Connectors

Compatible offerings



### General Purpose Adapters

Compatible offerings



### Cable Assemblies

Equivalent offerings



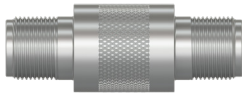
### VibeNavigator™

Portable data collection extension pole for A0643TX



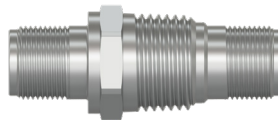
Scan here to view the complete Emerson / CSI Equivalent and Compatible Hardware Catalog

# POPULAR CABLE ADAPTERS



**CB901-1A**

2 pin MIL to 2 pin MIL,  
in-line feed through,  
316L stainless steel



**CB903-1A**

2 pin MIL to 2 pin MIL,  
bulkhead feed through,  
0.5 in. (12.7 mm) NPT,  
316L stainless steel



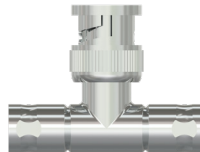
**CB908-1A**

2 pin MIL (316L stainless steel)  
to BNC plug adapter  
(nickel-plated brass),  
with overmolded reinforcement



**CB910-1A**

In-line BNC jack adapter,  
nickel-plated brass



**CB911-1A**

BNC "T" adapter,  
nickel-plated zinc



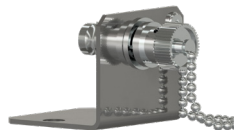
**CB911-3A**

In-line BNC plug adapter,  
nickel-plated brass



**CB912-1A**

2 socket MIL (black zinc alloy)  
to BNC plug adapter  
(nickel-plated brass),  
with overmolded reinforcement



**CB917-1A**

BNC connector  
(nickel-plated brass)  
with mounting bracket  
(304 stainless steel),  
includes BNC cap cover  
and chain



**EMPP**

Molded BNC jack connector  
with nylon threaded protector



**CB919-1A**

In-line BNC plug adapter,  
nickel-plated brass



**CB916-2A**

BNC plug to BNC plug,  
nickel-plated brass,  
with safety feature



**CB913-1A**

2 socket MIL (black zinc alloy)  
to BNC jack adapter  
(nickel-plated brass),  
with overmolded reinforcement

# JUNCTION BOXES

CTC offers the widest variety of junction boxes in the world. Our junction box solutions allow for the monitoring of remotely mounted vibration sensors which would be otherwise restricted to human access due to safety consideration. We also offer a selection of low-cost cable termination boxes that allow multiple measurement points to be routed to a single location to gather data. Many CTC junction boxes offer continuous output options for direct interface with online monitoring systems.

## Premium JB Series Switch Boxes

Fully-featured NEMA 4X (IP66) rated vibration junction box with IEPE sensor condition indicator lights and convenient interface with fold-forward panel for easy wiring. Compatible with single axis, biaxial, and triaxial inputs.



**JB100 / JB200**  
**Standard Size**

Fiberglass or stainless steel,  
input options:  
4 to 12 single, dual, or triaxial  
output sensors



**JB100**  
**Extended Capacity**

Fiberglass,  
input options:  
4 to 48 single, dual, or triaxial  
output sensors



**JB300**  
**Slope Top**

Stainless steel slope top,  
input options:  
4 to 12 single, dual, or triaxial  
output sensors

## Legacy Switch Boxes



**SB102 / SB202 / SB262**  
**Standard Size**

Fiberglass, stainless steel,  
or stainless steel slope top,  
input options:  
4 to 12 single axis sensors



**SB142 / SB242 / SB282**  
**Standard Size**

Fiberglass, stainless steel,  
or stainless steel slope top,  
input options:  
4 to 8 dual output sensors



**SSB-MODX**  
**Module**

Single-axis switch module,  
DIN rail mountable,  
input options:  
4 to 12 single axis sensors

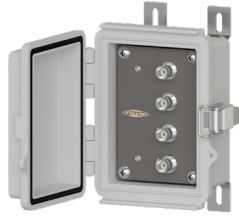
# JUNCTION BOXES

## Cable Termination and Enclosed BNC Connection Boxes



**CT101**

Cable termination box,  
input options:  
1 to 4 single output  
sensors



**MX702**

Polycarbonate  
mini-MAXX box,  
enclosed BNC connectors,  
1 to 4 single output  
sensors



**MX102 / MX202**

Fiberglass or stainless steel  
MAXX Boxes,  
input options:  
1 to 12 single output  
sensors



**MX502**

Aluminum  
Mini-MAXX Box,  
input options:  
1 to 4 single output  
sensors

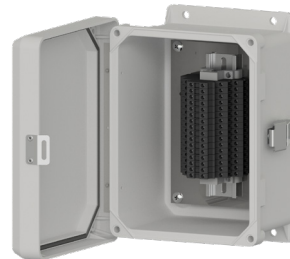
## Cable Reduction Boxes

CTC cable reduction boxes reduce the input cabling of up to 16 individual sensors into one multi-conductor cable. Utilizing a cable reduction box can significantly reduce cabling costs for applications with long cable runs. Fiberglass and stainless steel options are available.



**CR102 / CR202**

Fiberglass or stainless steel,  
input options:  
8, 12, and 16 single output sensors,  
-58 to 180 °F (-50 to 82 °C)



**CRHT102 / CRHT202**

Fiberglass or stainless steel,  
high temperature, input options:  
12 and 16 single output sensors,  
-40 to 212 °F (-40 to 100 °C)

## Empty Enclosures and Replacement Boards



**JBA0608-FG**

Empty fiberglass enclosure,  
6 x 8 x 4 in.  
(152.4 x 203.2 x 101.6 mm)



**JBA0608-SS**

Empty stainless steel  
enclosure,  
6 x 8 x 4 in.  
(152.4 x 203.2 x 101.6 mm)



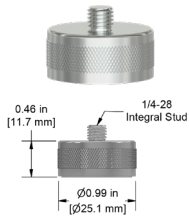
**JB900 Series**

Single axis, multi-channel switch  
box PC boards

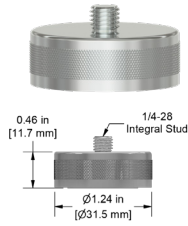
# MOUNTING HARDWARE

CTC offers a variety of adhesive and stud mounted sensor mounting pads. Magnet mounting pad options for portable field applications are also available, including flat and two-rail mounting configurations. We also offer specialty mounting accessories for fin-cooled motors as well as a variety of mounting probe tips which allow access to traditionally hard-to-reach bearing locations.

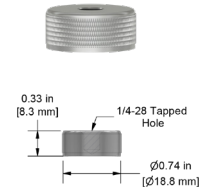
## Neodymium Iron Boron Rare Earth Magnets - Flat Surface



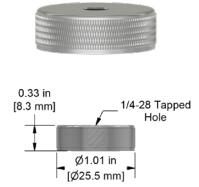
**MH103-1B**  
Pull strength:  
40 lbs (18 kg)



**MH104-1B**  
Pull strength:  
60 lbs (27 kg)

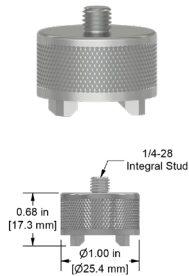


**MH110-1A**  
Ultra low profile,  
pull strength:  
21 lbs (10 kg)

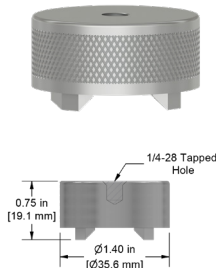


**MH111-1A**  
Ultra low profile,  
pull strength:  
24 lbs (11 kg)

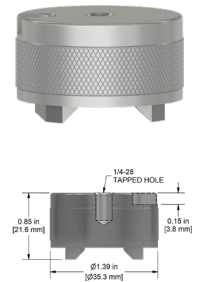
## Neodymium Iron Boron Rare Earth Magnets - Multipurpose



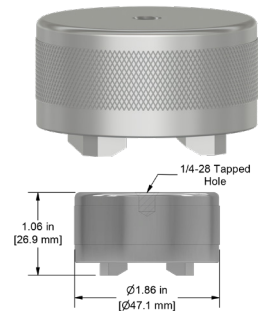
**MH112-1A**  
Pull strength:  
30 lbs (14 kg)



**MH114-3A**  
Pull strength:  
50 lbs (23 kg)

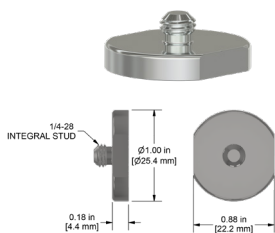


**MH114-3T**  
With triaxial locating notch,  
Pull strength:  
50 lbs (23 kg)

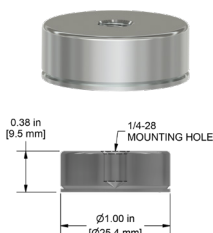


**MH115-2A**  
Pull strength:  
95 lbs (43 kg)

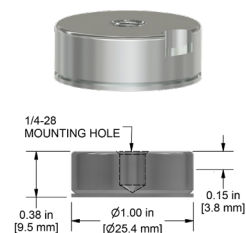
## Mounting Pads and Magnet Targets



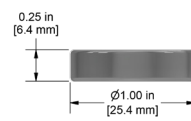
**MH101-1B**  
Mounting pad



**MH130-1A**  
Mounting pad



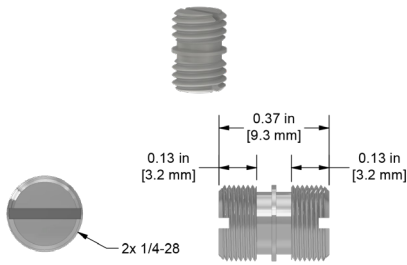
**MH130-1T**  
Mounting pad  
with triaxial locating notch



**MH133-1A**  
Mounting target

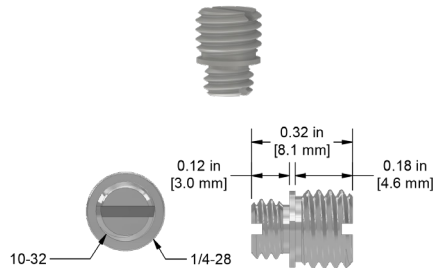
# MOUNTING HARDWARE

## Specialty Mounting Studs and Adapter Studs



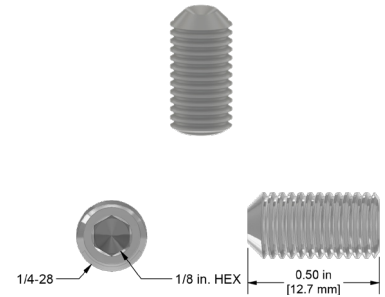
**MH108-1B**

1/4-28 to 1/4-28 mounting stud,  
303 stainless steel



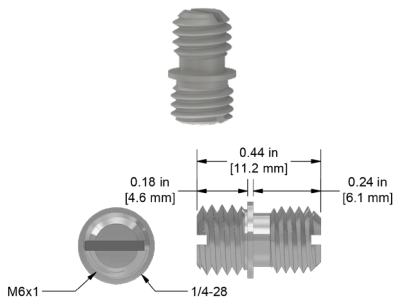
**MH108-3B**

1/4-28 to 10-32 adapter stud,  
303 stainless steel



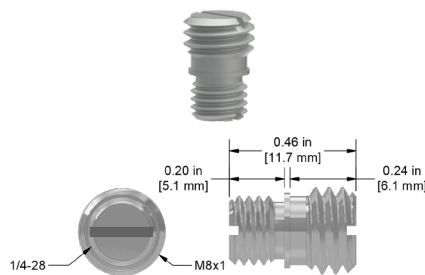
**MH108-4B**

1/4-28 mounting screw,  
303 stainless steel



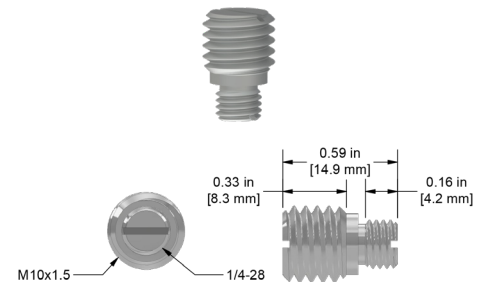
**MH108-5B**

1/4-28 to M6x1 adapter stud,  
303 stainless steel



**MH108-6B**

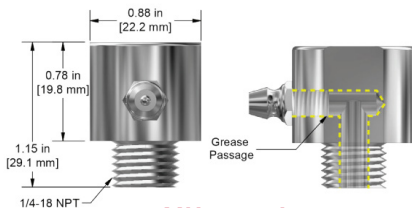
1/4-28 to M8x1.25 adapter stud,  
303 stainless steel



**MH108-7B**

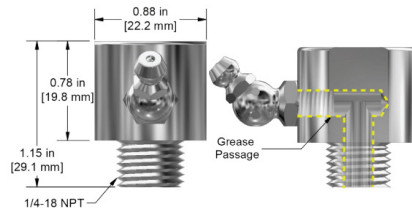
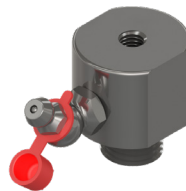
1/4-28 to M10x1.5 adapter stud,  
303 stainless steel

## Mounting Pads for Machine Lubrication



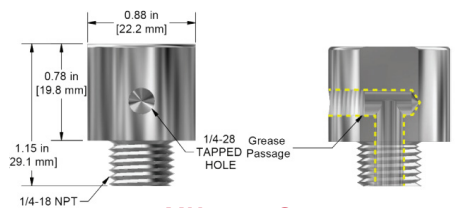
**MH134-1A**

With straight Zerk  
grease fitting adapter,  
1/4-18 NPT mounting thread,  
17-4 stainless steel



**MH134-1B**

With 45° Zerk  
grease fitting adapter,  
1/4-18 NPT mounting thread,  
17-4 stainless steel



**MH143-1C**

With no Zerk  
grease fitting adapter,  
1/4-18 NPT mounting thread,  
17-4 stainless steel

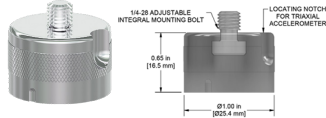
# MOUNTING HARDWARE

## Accelerometer Quick Disconnects

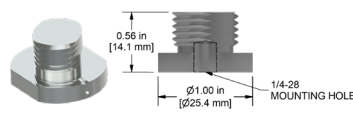
Quick Disconnects are ideally suited for triaxial sensor use. The permanently-mounted stud creates a consistent mounting location for portable routes. The receptacle features a triaxial locating notch and ¼-turn engagement onto the stud, ensuring the sensor is oriented in the same position for every reading.



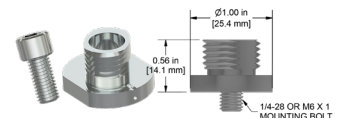
**MH107-1A**  
Quick disconnect  
receptacle



**MH107-3A**  
Quick disconnect  
receptacle



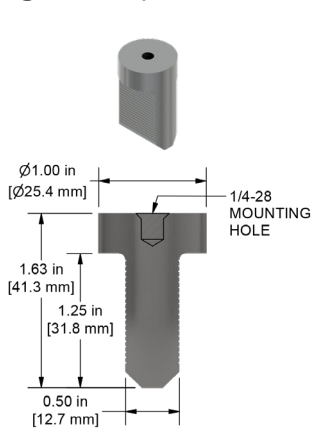
**MH107-1B**  
Quick disconnect  
stud



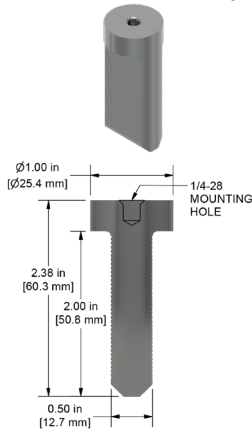
**MH107-2B**  
Quick disconnect stud  
with through-hole  
mounting

## Motor Fin Mount Pads

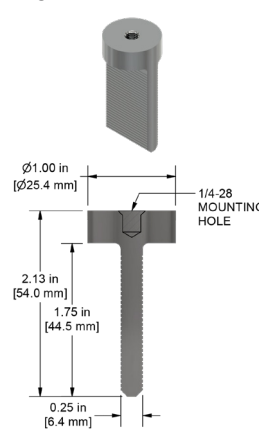
Take measurements in tough-to-reach places. Our fin mount probes are perfect for narrow measurement points in fin-cooled motors. Once installed, fin mounts can be used to attract a magnet for portable route measurements or permanently mounted accelerometers.



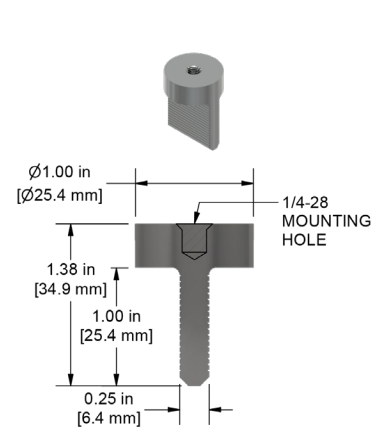
**MH118-1A**  
17-4 stainless steel



**MH118-2A**  
17-4 stainless steel



**MH118-3A**  
17-4 stainless steel



**MH118-4A**  
17-4 stainless steel

## MH117 Series Accelerometer Installation Tool Kits

Spot face and drill in one operation, with options for taps and ratcheting tap handle included.



High Speed Steel End Mill Tool Kits	
Thread Sizes	End Mill Diameters
¼-28	1 in., 1¼ in.
M6x1	1¼ in.

Carbide Tipped End Mill Tool Kits	
Thread Sizes	End Mill Diameters
¼-28	1¼ in.

Designed For Use With Wireless Sensors	
Thread Size	End Mill Diameters
¼-28	1¼ in.

*MH117-10A and MH117-10B are designed for use with popular wireless sensors including:*  
 Acoem Eagle EGL1103000  
 Acoem Sparrow SPW123000  
 Baker Hughes Ranger Pro 70M303-AXX  
 Erbesd Phantom EPH-V11E & EPH-V10E  
 Sensoteq Tau E TS201 (Stud Version)



# AMP LINE CONTINUOUS HEALTH MONITORING SOLUTIONS

CTC provides a wide range of 4-20 mA output solutions for industrial applications. Our standard loop power vibration sensors offer both velocity and acceleration output measurement options. Additionally, our dual output loop power sensors combine a 4-20 mA output proportional to vibration with a temperature output in a single sensor. You can choose from top or side exit connectors, integral cables, and armored integral cable options for these sensors.

We also offer 24 VDC powered transmitters that power standard IEPE accelerometers, converting vibration into a powered 4-20 mA signal. When paired with CTC dual output vibration and temperature sensors, these transmitters provide a 4-20 mA output for temperature as well.

## Output Proportional to Vibration in Velocity



**LP200 Series**

1<sup>st</sup> order analog filter, -4 to 212 °F (-20 to 100 °C) temperature range, dual output with °C temperature output option available



**LP500 Series**

2<sup>nd</sup> order digital filter, -40 to 257 °F (-40 to 125 °C) temperature range, 2 Hz low frequency response, dual output with °C temperature output option available

## Output Proportional to Vibration in Acceleration



**LP300 Series**

1<sup>st</sup> order analog filter, -4 to 212 °F (-20 to 100 °C) temperature range, dual output with °C temperature output option available



**LP600 Series**

2<sup>nd</sup> order digital filter, -40 to 257 °F (-40 to 125 °C) temperature range, 2 Hz low frequency response, dual output with °C temperature output option available

## Hazardous Rated



**LPH802**

Nonincendive, Intrinsically Safe, CSA North America Class 1, Division 1 and IECEx/ATEX Zone 0,1 Approved, Output Proportional to Vibration in Velocity



**LPH822**

Nonincendive, CSA North America Class 1, Division 2, IECEx/ATEX Zone 2 Approved, Output Proportional to Vibration in Velocity



**LPH902**

Nonincendive, Intrinsically Safe, CSA North America Class 1, Division 1 and IECEx/ATEX Zone 0,1 Approved, Output Proportional to Vibration in Acceleration



**LPH922**

Nonincendive, CSA North America Class 1, Division 2, IECEx/ATEX Zone 2 Approved, Output Proportional to Vibration in Acceleration



## Signal Conditioners

CTC's SC Series signal conditioners are fully customizable for your application's needs and price point. All SC Series signal conditioners provide process control signals to a PLC, DCS, or SCADA system that are proportional to the vibration levels set within the signal conditioner and come with a built-in temperature output.

The SC310 Series offers a single vibration band output. The SC320 Series features dual band technology which allows the user to configure two independent process control output signals from one sensor. This feature allows for the monitoring of two separate vibration / frequency bands with one device, such as both standard vibration monitoring and ultrasonic early bearing fault detection. Limited to 100 mV/g accelerometers, the SC150 provides over \$100 in savings over the SC300 Series without compromising on its excellence.



**SC150**

Standard signal conditioner for 100 mV/g sensors, with 4-20 mA proportional output and user selectable 0-10 or 0-5 V output



**SC310**

USB configurable, single band vibration/ultrasound plus temperature



**SC320**

USB configurable, dual band vibration/ultrasound plus temperature

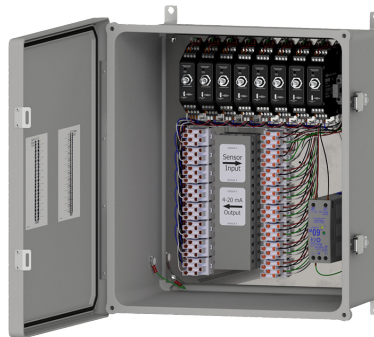
## Signal Conditioner Enclosures

CTC's signal conditioner enclosures are turnkey solutions which come fully populated with signal conditioners, power supply, and terminal blocks for easy sensor terminations. Terminal blocks come wired to the signal conditioners and the outputs from the signal conditioners are wired to terminal blocks for integration into PLC / DCS systems. The signal conditioners come configured based on customer requirements.



**SCE110 Series**

Fiberglass enclosure for 1 to 4 SC Series signal conditioners, NEMA 4X (IP66) rated



**SCE310 Series**

Fiberglass enclosure for 1 to 8 SC Series signal conditioners, NEMA 4X (IP66) rated



**SCD100 Series**

Fiberglass relay and display enclosure for 1 to 4 SC Series signal conditioners, NEMA 4X (IP65) rated

# PRO LINE PROXIMITY PROBE SYSTEMS

CTC offers a complete line of proximity probe (or eddy current probe) systems designed and built to endure the harshest industrial environments. Proximity probe systems are available with probe tip sizes of FFv™, 8 mm, 11 mm, and 25 mm diameters. The variety of probe sizes offered allows accurate and precise machinery measurements for applications involving radial dynamic, axial rotor position, and thermal case expansion measurements. Hazardous area approved systems are also available.

## Probe Tip Options



**FFv™**

Standard or armor jacketed cable



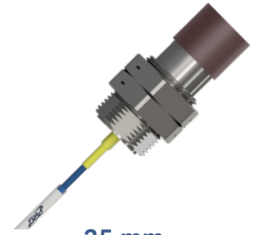
**8 mm**

Standard or armor jacketed cable



**11 mm**

Standard or armor jacketed cable



**25 mm**

Standard or armor jacketed cable

## Complete Your Proximity Probe Set



**Drivers**

With BNC for fully-buffered dynamic voltage output



**Extension Cables**

Standard or armor jacketed cable



**NPT Pressure Seal Fitting**

Single sided NPT fitting with armor jacketed cable on external cable side

## Proximity Probe Accessories



**Enclosures**

Fiberglass or stainless steel, 1 to 14 channels, powered and 4-20 mA options available



**Reverse Mount Housing**

Top or side exit, anodized aluminum body, 316L stainless steel sleeve



**Mounting Blocks**

Aluminum clamping blocks for 3/8-24, 1/4-28, M8x1, and M10x1 probe bodies



**Mounting Bushings**

316L stainless steel

# TMP LINE TEST AND MEASUREMENT PRODUCTS

TMP Line products, CTC's line of lightweight and low profile test and measurement instruments, are thoughtfully engineered to provide efficient and reliable research-grade data measurements at the industry's lowest price point.

## Test and Measurement Accelerometers

Our TMP sensors are lightweight and low profile, making them suitable for many laboratory testing and general purpose applications. Constructed with titanium cases and having frequency ranges up to 30 kHz, TMP sensors are among the highest quality vibration sensors in the world. All sensors come packaged in a complimentary, reusable storage case to protect your investment.



### TCA110 and TCB110

Top exit or side exit  
10-32 coaxial connector,  
10 mV/g,  
±10% sensitivity tolerance,  
0.35 oz. (10 g)



### TDA110 and TDB110

Top exit or side exit  
10-32 coaxial connector,  
50 mV/g,  
±10% sensitivity tolerance,  
0.35 oz. (10 g)



### TEA110 and TEB110

Top exit or side exit  
10-32 coaxial connector,  
100 mV/g,  
±10% sensitivity tolerance,  
0.35 oz. (10 g)

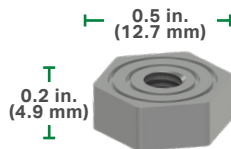


### TFA110 and TFB110

Top exit or side exit  
10-32 coaxial connector,  
500 mV/g,  
±10% sensitivity tolerance,  
0.35 oz. (10 g)

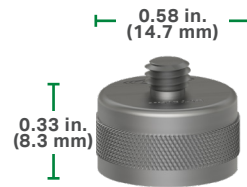
## Test and Measurement Mounting Bases

Our lightweight, low profile mounting bases are designed for superior performance in research and development applications.



### MHT130

Isolated mounting pad



### MHT154

Flat surface mounting magnet,  
15 lbs (18 kg) pull strength

## Test and Measurement Coaxial Cabling and Connectors



### TMC01

White FEP jacket



### TMC02

Black PVC jacket



### TMC03

Green PTFE jacket



### EC and FC

BNC jack and plug connectors



### FD10 and MD10

10-32 jack and plug connectors

