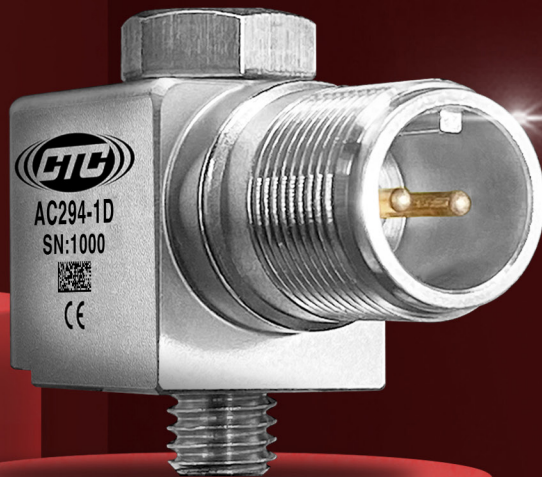




CONNECTION TECHNOLOGY CENTER, INC.

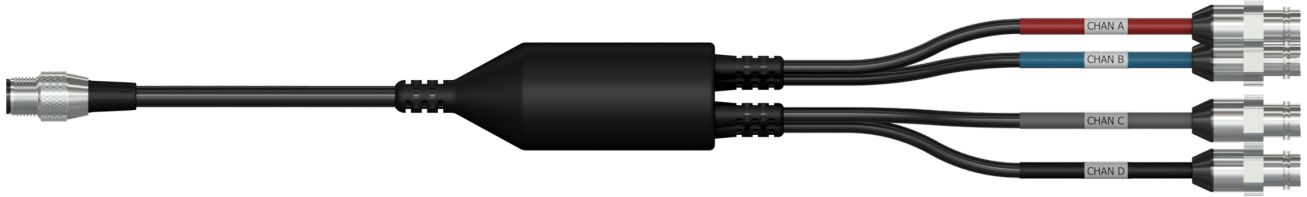
# EMERSON EQUIVALENT AND COMPATIBLE VIBRATION ANALYSIS HARDWARE





# EMERSON/CSI EQUIVALENT & COMPATIBLE VIBRATION ANALYSIS HARDWARE

CTC is proud to offer a wide selection of accelerometers, cable adapters, cable and connector assemblies, mounting hardware, and more - all fully compatible with Emerson/CSI's broad range of data collectors.



## WHY CHOOSE CTC PRODUCTS?



### FLEXIBILITY

Save money by ordering exactly what you need:

**No Minimum Order Quantities** on any CTC product.

**Customizable Cable Lengths** create any cable and connector assembly at your preferred length using CTC's proprietary online Custom Cable Wizard application.



### SPEED

Did you know CTC has the industry's fastest 10-day standard lead times? Get your products shipped sooner so you never have to plan your maintenance schedule around a lengthy delivery window.



### DURABILITY

Our products are built with strength to endure the harshest industrial environments, and we stand behind the quality of our products with the industry's best warranties.



### UNMATCHED CUSTOMER SERVICE

Get help and answers quickly from our knowledgeable, US-based customer service team - we always answer phone calls and respond to emails promptly.

# ACCELEROMETERS

## AT-A-GLANCE EQUIVALENT PART NUMBERS

CTC offers the following parts which are a direct equivalent to the listed corresponding Emerson/CSI part number

EMERSON/CSI	CTC
A0120LF	AC133-1D
A0220HF	UEB332
A0322LC	MEB210
A0322L5	AC192-1D
A0322R5	AC104-1A AC194-1D
A0322R5HT	AC208-1D
A0420HT	AC207-1D
A0643TX	TCEB331 + MH114-3T
A0710GP	AC294-1D
A0760GP	AC292-1D

## EQUIVALENT PART NUMBERS - DETAILED PRODUCT DESCRIPTIONS



### A0120LF | AC133-1D

Standard Size, Single-Axis, Low Frequency Accelerometer, Top Exit 2 Pin Connector, 500 mV/g,  $\pm 10\%$  Sensitivity, 6-600,000 CPM Frequency Response ( $\pm 3$  dB), -58 to 250 °F (-50 to 121 °C)



### A0220HF | UEB332

Miniature Size, Single-Axis, High-Frequency, Dynamic Vibration IEPE Ultrasound Sensor, Top Exit 2 Pin Mini-MIL Connector, 100 mV/g,  $\pm 10\%$  Sensitivity, 30-1,380,000 CPM Frequency Response ( $\pm 3$  dB), -58 to 250 °F (-50 to 121 °C) Temperature Range



### A0322LC | MEB210

Molded, Single-Axis, Lightweight Accelerometer, Top Exit Molded Integral Cable, 100 mV/g,  $\pm 10\%$  Sensitivity, 30-900,000 CPM Frequency Response ( $\pm 3$  dB), -58 to 250 °F (-50 to 121 °C) Temperature Range, IP68 Molded Cable Sealing, 10 ft. (3 m) Minimum Allowable Integral Cable Length



### A0322L5 | AC192-1D

Compact Size, Single-Axis, Multipurpose Accelerometer, Top Exit 2 Pin Connector, 100 mV/g,  $\pm 10\%$  Sensitivity, 24-780,000 CPM Frequency Response ( $\pm 3$  dB), -58 to 250 °F (-50 to 121 °C) Temperature Range



**A0322R5 | AC104-1A**

Standard Size, Single-Axis, Multipurpose Accelerometer, Side Exit 2 Pin Connector, 100 mV/g, ±10% Sensitivity, 30-600,000 CPM Frequency Response (±3 dB), -58 to 250 °F (-50 to 121 °C) Temperature Range



**A0322R5 | AC194-1D**

Compact Size, Single-Axis, Multipurpose Accelerometer, Side Exit 2 Pin Connector, 100 mV/g, ±10% Sensitivity, 30-600,000 CPM Frequency Response (±3 dB), -58 to 250 °F (-50 to 121 °C) Temperature Range



**A0322R5HT | AC208-1D**

Standard Size, Single-Axis, High Temperature IEPE Accelerometer, Side Exit 2 Pin Connector, 100 mV/g, ±10% Sensitivity, 30-660,000 CPM Frequency Response (±3 dB), -58 to 325 °F (-50 to 162 °C) Temperature Range



**A0420HT | AC207-1D**

Standard Size, Single-Axis, High Temperature IEPE Accelerometer, Top Exit 2 Pin Connector, 100 mV/g, ±10% Sensitivity, 30-750,000 CPM Frequency Response (±3 dB), -58 to 325 °F (-50 to 162 °C) Temperature Range



**A0643TX | TCEB331 + MH114-3T**

**TCEB331** Premium Miniature Circular Triaxial Accelerometer, Top Exit 4 Pin Mini-MIL Connector, 100 mV/g, ±5% Sensitivity, 120-720,000 CPM Frequency Response (±3 dB), -65 to 250 °F (-54 to 121 °C) Temperature Range, Follows Cartesian Coordinate Phase Configuration

**MH114-3T** Multipurpose, 2 Rail Magnet Mounting Base, Neodymium Iron Boron in 303 Stainless Steel Case, 1/4-28 Blind Tapped Hole, Triaxial Mounting Notch, 50 lbs. (23 kg) Pull Strength, 1.39 in. (35.31 mm) OD, 0.85 in. (21.59 mm) Height, 266 °F (130 °C) Maximum Temperature



**A0710GP | AC294-1D**

Compact Size, Single-Axis, Premium Accelerometer, Side Exit 2 Pin Connector, 100 mV/g, ±5% Sensitivity, 18-600,000 CPM Frequency Response (±3 dB), -58 to 250 °F (-50 to 121 °C) Temperature Range



**A0760GP | AC292-1D**

Compact Size, Single-Axis, Premium Accelerometer, Top Exit 2 Pin Connector, 100 mV/g, ±5% Sensitivity, 18-900,000 CPM Frequency Response (±3 dB), -58 to 250 °F (-50 to 121 °C) Temperature Range

# CABLE ADAPTERS

## AT-A-GLANCE EQUIVALENT PART NUMBERS

CTC offers the following parts which are a direct equivalent to the listed corresponding Emerson/CSI part number

EMERSON/CSI (AMS 2140)	CTC
A40ADPTER	CMX2277
D25473	CMX2147
D25483	CMX2154
D25501	CMX2155
D25504	CMX2261-E
D25505	CMX2262-E
D25506	CMX2273
D25688	CMX2278

EMERSON/CSI (CSI 2130)	CTC
A06240A	CMX2106
A06280A	CMX2105
A0628BV	CMX2121
A06290A	CMX2251
A06290V	CMX2136-AV CMX2136-VV
A625	CMX2104

EMERSON/CSI (404A Photo Tachometer)	CTC
A404C	CMX2202

## EQUIVALENT PART NUMBERS - DETAILED PRODUCT DESCRIPTIONS



### A06240A | CMX2106

25 Pin Adapter with Single BNC Input, Dual Output Wired for Channel "A" Acceleration Input, Channel "B" PeakVue, 221 °F (105 °C) Maximum Temperature, Compatible with CSI 2120/2130 Data Collector



### A06280A | CMX2105

25 Pin Adapter with Dual BNC Outputs, Channel "A" Acceleration Output, Channel "B" Acceleration Output, 221 °F (105 °C) Maximum Temperature, Compatible with CSI 2120/2130 Data Collector



### A0628BV | CMX2121

25 Pin Adapter with Dual BNC Jacks, Wired for Dual Channel Voltage Input, 221 °F (105 °C) Maximum Temperature, Compatible with CSI 2120 Data Collector

### A06290A | CMX2251



2 Channel 5 Pin Molded M12 Connector to 2 Molded M12 Sockets, Dual Channel Acceleration Input, Channel "A" Yellow, Channel "B" Blue, Black Polyurethane Jacketed, 4-Conductor Cable into Two 2-Conductor Cables, One 0.25 in. (6.35 mm) Cable Diameter, Two 0.175 (4.45 mm) Cable Diameters, 18 in. (45.7 cm) Overall Length, 250 °F (121 °C) Maximum Temperature, Compatible with CSI 2130 Data Collector

### A06290V | CMX2136-AV



25 Pin Adapter with Dual BNC "E" Jacks, Channel "1" Acceleration Input, Channel "2" Voltage Input, 221 °F (105 °C) Maximum Temperature, Compatible with CSI 2130 Data Collector

### A06290V | CMX2136-VV



25 Pin Adapter with Dual BNC Jacks, Channel "1" Voltage Input, Channel "2" Voltage Input, 221 °F (105 °C) Maximum Temperature, Compatible with CSI 2130 Data Collector

### A404C | CMX2202



4 Socket AMP Adapter to Splitter with One BNC "F" Plug and One 0.25 in. (0.64 cm) Power Adapter, Black Polyurethane Jacketed, 4-Conductor Cable into Two 2-Conductor Cables, One 0.25 in. (6.35 mm) Cable Diameter, Two 0.175 (4.45 mm) Cable Diameters, 18 in. (45.7 cm) Overall Length, 250 °F (121 °C) Maximum Temperature, Compatible with 404A Photo Tachometer

### A40ADPTER | CMX2277



8 Pin Circular M12 Connector to Four BNC "E" Jacks, Channel "A" Red Voltage Input, Channel "B" Blue Voltage Input, Channel "C" Grey Voltage Input, Channel "D" Black Voltage Input, Black Polyurethane Jacketed, 4-Conductor Cable into Four 2-Conductor Cables, One 0.25 in. (6.35 mm) Cable Diameter, Four 0.175 in. (4.45 mm) Cable Diameters, 17 in. (43.2 cm) Overall Length, 250 °F (121 °C) Maximum Temperature, Compatible with AMS 2140 Data Collector

### A625 | CMX2104



25 Pin Adapter to Dual BNC "E" Jacks, Channel "1" Acceleration Input, Channel "2" Voltage Input, 221 °F (105 °C) Maximum Temperature, Compatible with CSI 2120/2130 Data Collector

**D25473 | CMX2147**



8 Pin Molded M12 Connector to 4 Pin LEMO® Connector, Single Channel Tachometer Input, Black Polyurethane Jacketed 2 Conductor Cable, 0.175 in. (4.45 mm) Cable Diameter, 22 in. (55.9 cm) Cable Length, 194 °F (90 °C) Maximum Temperature, Compatible with AMS 2140 Data Collector

**D25483 | CMX2154**



5 Pin Molded M12 Connector to BNC "F" Plug, Single Channel Acceleration Input, Black Polyurethane Jacketed 2 Conductor Cable, 0.25 in. (6.35 mm) Cable Diameter, 8 in. (20.3 cm) Cable Length, 176 °F (80 °C) Maximum Temperature, Compatible with AMS 2140 Data Collector

**D25501 | CMX2155**



5 Pin A-Coded M12 Connector to 5 Socket A-Coded M12 Adapter, 4 Channel Acceleration Input, Black Polyurethane Jacketed 6 Conductor Cable, 0.25 in. (6.35 mm) Cable Diameter, 9 in. (23 cm) Cable Length, 176 °F (80 °C) Maximum Temperature, Compatible with AMS 2140 Data Collector

**D25504 | CMX2261-E**



5 Pin M12 Connector to Dual BNC "E" Jacks, Dual Channel Acceleration Input, Channel "A" Red, Channel "B" Blue, Black Polyurethane Jacketed, 4-Conductor Cable into Two 2-Conductor Cables, One 0.25 in. (6.35 mm) Cable Diameter, Two 0.175 in. (4.45 mm) Cable Diameters, 18 in. (45.7 cm) Overall Length, 250 °F (121 °C) Maximum Temperature, Compatible with AMS 2140 Data Collector

**D25505 | CMX2262-E**



5 Pin M12 Connector to Dual BNC "E" Jacks, Dual Channel Acceleration Input, Channel "C" Grey, Channel "D" Black, Black Polyurethane Jacketed, 4-Conductor Cable into Two 2-Conductor Cables, One 0.25 in. (6.35 mm) Cable Diameter, Two 0.175 in. (4.45 mm) Cable Diameters, 18 in. (45.7 cm) Overall Length, 250 °F (121 °C) Maximum Temperature, Compatible with AMS 2140 Data Collector

**D25506 | CMX2273**



8 Pin Circular M12 Adapter to Dual BNC "E" Jacks, Channel "A" Red Voltage Input, Channel "B" Blue Voltage Input, Black Polyurethane Jacketed, 4-Conductor Cable into Two 2-Conductor Cables, One 0.25 in. (6.35 mm) Cable Diameter, Two 0.175 in. (4.45 mm) Cable Diameters, 18 in. (45.7 cm) Overall Length, 250 °F (121 °C) Maximum Temperature, Compatible with AMS 2140 Data Collector

## D25688 | CMX2278



8 Pin Circular M12 Connector to Three BNC "E" Jacks, Three Channel Voltage Input, Channel "A" Red, Channel "B" Blue, Tach Yellow, Black Polyurethane Jacketed, 4-Conductor Cable into Three 2-Conductor Cables, One 0.25 in. (6.35 mm) Cable Diameter, Three 0.175 in. (4.45 mm) Cable Diameters, 18 in. (45.7 cm) Overall Length, 250 °F (121 °C) Maximum Temperature, Compatible with AMS 2140 Data Collector

## COMPATIBLE PART NUMBERS - DETAILED PRODUCT DESCRIPTIONS

CTC offers the following parts which do not have a direct equivalent Emerson/CSI part number, but are compatible for use with Emerson/CSI Data Collectors.

### CMX2171



8 Pin Circular M12 Connector to BNC "E" Jack, Single Channel Voltage Input, Black Polyurethane Jacketed 2 Conductor Cable, 0.25 in. (6.35 mm) Cable Diameter, 2 ft. (0.61 m) Cable Length, 176 °F (80 °C) Maximum Temperature, Compatible with CSI 2140 Data Collector

### CMX2135



5 Pin M12 Connector to BNC Jack, Single Channel Acceleration Input, Black Polyurethane Jacketed 2 Conductor Cable, 0.25 in. (6.35 mm) Cable Diameter, 18 in. (45.72 cm) Cable Length, 250 °F (121 °C) Maximum Temperature, Compatible with CSI 2130/2140 Data Collectors

### CMX2148



8 Pin M12 Connector to 4 Pin Amphenol Connector, Single Channel Tachometer Input, Black Polyurethane Jacketed 4 Conductor Cable, 0.175 in. (4.45 mm) Cable Diameter, 2 ft. (0.61 m) Cable Length, 194 °F (90 °C) Maximum Temperature, Compatible with CSI 2140 with 404 Series Laser Tach

### CMX2149



8 Pin M12 Connector to BNC "F" Plug, Single Channel Tachometer Input, Black Polyurethane Jacketed 4 Conductor Cable, 0.175 in. (4.45 mm) Cable Diameter, 2 ft. (0.61 m) Cable Length, 194 °F (90 °C) Maximum Temperature, Compatible with CSI 2140 with TTL Tach

### CMX2252

5 Pin M12 Connector to Dual BNC "E" Jacks, Dual Channel Acceleration Input, Channel "A" Yellow, Channel "B" Blue, Black Polyurethane Jacketed, 4-Conductor Cable into Two 2-Conductor Cables, One 0.25 in. (6.35 mm) Cable Diameter, Two 0.175 in. (4.45 mm) Cable Diameters, 18 in. (45.72 cm) Overall Length, 250 °F (121 °C) Maximum Temperature, Compatible with CSI 2130 Data Collector



### CMX2253

5 Pin M12 Connector to Dual BNC "F" Jacks, Dual Channel Acceleration Input, Channel "A" Yellow, Channel "B" Blue, Black Polyurethane Jacketed, 4-Conductor Cable into Two 2-Conductor Cables, One 0.25 in. (6.35 mm) Cable Diameter, Two 0.175 in. (4.45 mm) Cable Diameters, 18 in. (45.72 cm) Overall Length, 250 °F (121 °C) Maximum Temperature, Compatible with CSI 2130 Data Collector



### CMX2261-F

5 Pin M12 Connector to Dual BNC "F" Plugs, Dual Channel Acceleration Input, Channel "A" Red, Channel "B" Blue, Black Polyurethane Jacketed, 4-Conductor Cable into Two 2-Conductor Cables, One 0.25 in. (6.35 mm) Cable Diameter, Two 0.175 in. (4.45 mm) Cable Diameters, 18 in. (45.72 cm) Overall Length, 250 °F (121 °C) Maximum Temperature, Compatible with CSI 2140 Data Collector



### CMX2261-T

5 Pin M12 Connector to Dual M12 Sockets, Dual Channel Acceleration Input, Channel "1" Red, Channel "2" Blue, Black Polyurethane Jacketed, 4-Conductor Cable into Two 2-Conductor Cables, One 0.25 in. (6.35 mm) Cable Diameter, Two 0.175 in. (4.45 mm) Cable Diameters, 18 in. (45.72 cm) Overall Length, 250 °F (121 °C) Maximum Temperature, Compatible with CSI 2140 Data Collector



### CMX2262-F

5 Pin M12 Connector to Dual BNC "F" Plugs, Dual Channel Acceleration Input, Channel "C" Grey, Channel "D" Black, Black Polyurethane Jacketed, 4-Conductor Cable into Two 2-Conductor Cables, One 0.25 in. (6.35 mm) Cable Diameter, Two 0.175 in. (4.45 mm) Cable Diameters, 18 in. (45.72 cm) Overall Length, 250 °F (121 °C) Maximum Temperature, Compatible with CSI 2140 Data Collector



### CMX2262-T

5 Pin M12 Connector to Dual M12 Socket, Dual Channel Acceleration Input, Channel "C" Grey, Channel "D" Black, Black Polyurethane Jacketed, 4-Conductor Cable into Two 2-Conductor Cables, One 0.25 in. (6.35 mm) Cable Diameter, Two 0.175 in. (4.45 mm) Cable Diameters, 18 in. (45.72 cm) Overall Length, 250 °F (121 °C) Maximum Temperature, Compatible with CSI 2140 Data Collector





### CMX2272

8 Pin Circular M12 Connector to Dual BNC Connectors, Voltage and Tachometer Input, Channel "A" Red, Tach Yellow, Black Polyurethane Jacketed, 4-Conductor Cable into Two 2-Conductor Cables, One 0.25 in. (6.35 mm) Cable Diameter, Two 0.175 in. (4.45 mm) Cable Diameters, 18 in. (45.72 cm) Overall Length, 250 °F (121 °C) Maximum Temperature, Compatible with CSI 2140 with TTL Tach



### CMX2274

8 Pin Circular M12 Connector to Dual BNC "E" Jacks and One BNC "F" Plug, Dual Voltage Input and Tachometer Input, Channel "A" Red, Channel "B" Blue, Tach Yellow, Black Polyurethane Jacketed, 4-Conductor Cable into Three 2-Conductor Cables, One 0.25 in. (6.35 mm) Cable Diameter, Three 0.175 in. (4.45 mm) Cable Diameters, 18 in. (45.72 cm) Overall Length, 250 °F (121 °C) Maximum Temperature, Compatible with CSI 2140 Data Collector



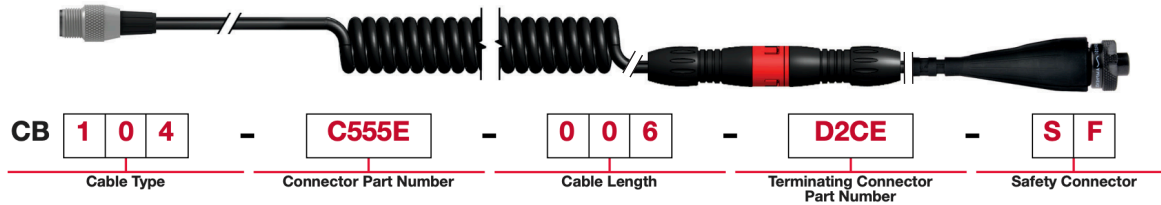
### CMX2275

8 Pin Circular M12 Connector to Three BNC "E" Jacks, Three Channel Voltage Input, Channel "A" Red, Channel "B" Blue, Channel "C" Grey, Black Polyurethane Jacketed, 4-Conductor Cable into Three 2-Conductor Cables, One 0.25 in. (6.35 mm) Cable Diameter, Three 0.175 (4.45 mm) Cable Diameters, Three 0.175 in. (4.45 mm) Cable Diameters, 18 in. (45.72 cm) Overall Length, 250 °F (121 °C) Maximum Temperature, Compatible with CSI 2140 Data Collector

# CABLE ASSEMBLY CONFIGURATION

## UNDERSTANDING A CABLE AND CONNECTOR ASSEMBLY PART NUMBER

CTC's cable assembly part numbers are formatted as such:



While the assemblies listed on the following pages are configured to the exact length of the corresponding Emerson assembly, you may also extend or shorten the cable length using our Custom Cable Wizard on our website:

The screenshot displays the Custom Cable Wizard interface with the following configuration details:

- Cable:** CB104, 2 Conductor Coiled, Shielded Cable, Black Polyurethane Jacket, 0.21" (5.3 mm) OD, 250°F (121 °C) Max Temp. [Datasheet](#)
- Coiled Cable Length:** 16 ft. (4.88 m) Length
- Connector 1:** C555E, Emerson 2140 & 2130 Compatible, 5 Pin M12 Connector, Channel "A" Acceleration Input. [Datasheet](#)
- Connector 2:** D2CE, 2 Socket MIL-Spec Connector with Shield/Drain wire used as Common. [Datasheet](#)
- Safety Feature:** SF, Break-Away Safety Connector

Product details for **CB104-C555E 016 D2CE-SF-RR**:

- 2 Conductor Coiled, Shielded Cable, Black Polyurethane Jacket, 0.21" (5.3 mm) OD, 250 °F (121 °C) Max Temp; Coiled Length: 16 ft. (4.88 m) Length; Connector 1: Emerson 2140 & 2130 Compatible, 5 Pin M12 Connector, Channel "A" Acceleration Input; Connector 2: 2 Socket MIL-Spec Connector with Shield/Drain wire used as Common, and Custom Molded Polyurethane Strain Relief, Portable Measurement, 250 °F (121 °C) Max Temp; Break-Away Safety Connector Color Coding: Red Heat Shrinks on Both Ends
- Price:
- Qty:

Buttons: [Add To Cart](#) [Add To Quote](#)

# CABLE ASSEMBLIES

## AT-A-GLANCE EQUIVALENT PART NUMBERS

CTC offers the following parts which are a direct equivalent to the listed corresponding Emerson/CSI part number

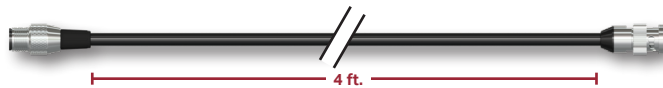
EMERSON/CSI	CTC
D25472	CB103-C576-004-F
D25473	CB110-C566-002-C330
D25474	CB110-C566-003.5-C330
D25475	CB110-C566-006-C330
D25476	CB103-C563-002M-C613
D25479	CB103-C585-004-F
D25480	CB103-C555-005-D2C-RR
D25481	CB103-C579-005-D2C-BB
D25483	CB103-C555-002M-F-RR
D25484	CB103-C579-002M-F-BB
D25485	CB103-D2C-009-F-RR
D25486	CB103-D2C-009-F-BB
D25487	CB103-D2C-009-F-WW

EMERSON/CSI	CTC
D25488	CB103-D2C-009-F
D25489	CB103-D2C-004-F-RR
D25490	CB103-D2C-004-F-BB
D25491	CB103-D2C-004-F-WW
D25492	CB103-D2C-004-F
D25499	CB103-F-004-F
D25500	CB103-F-009-F
D25525	CB103-C558-002M-F
D25526	CB103-C558-005-D2C
D25543	CB104-C555E-006-D2CE-SF
D25777	CB117-C614-006-C640
D25782	CB104-C555E-006-D2CE

## EQUIVALENT PART NUMBERS - DETAILED PRODUCT DESCRIPTIONS

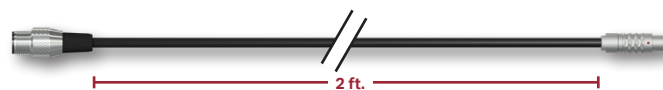
### D25472 | CB103-C576-004-F

2 Conductor, Twisted, Shielded Pair Cable with Black Polyurethane Jacket, 0.245 in. (6 mm) OD, 250 °F (121 °C) Maximum Temperature; Connector 1: 8 Pin M12 Connector, 303 Stainless Steel Shell, Single Channel Tachometer Input; Connector 2: BNC Plug Connector, Polycarbonate Overmolded; 4 ft. Length



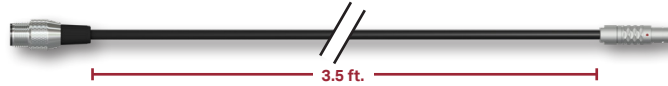
### D25473 | CB110-C566-002-C330

2 Conductor, Twisted, Shielded Pair Cable with Lightweight Black Polyurethane Jacket, 0.175 in. (4.5 mm) OD, 250 °F (121 °C) Maximum Temperature; Connector 1: 8 Pin M12 Connector, 303 Stainless Steel Shell, Single Channel Tachometer Input; Connector 2: 4 Pin LEMO® Connector, Chrome-Plated Copper Shell, Single Channel Acceleration Input; 2 ft. Length



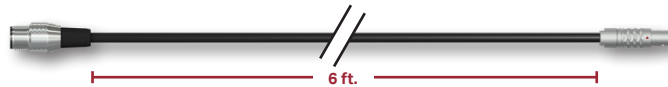
**D25474 | CB110-C566-003.5-C330**

2 Conductor, Twisted, Shielded Pair Cable with Lightweight Black Polyurethane Jacket, 0.175 in. (4.5 mm) OD, 250 °F (121 °C) Maximum Temperature; Connector 1: 8 Pin M12 Connector, 303 Stainless Steel Shell, Single Channel Tachometer Input; Connector 2: 4 Pin LEMO® Connector, Chrome-Plated Copper Shell, Single Channel Acceleration Input; 3.5 ft. Length



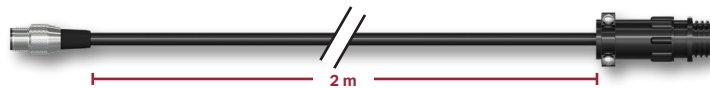
**D25475 | CB110-C566-006-C330**

2 Conductor, Twisted, Shielded Pair Cable with Lightweight Black Polyurethane Jacket, 0.175 in. (4.5 mm) OD, 250 °F (121 °C) Maximum Temperature; Connector 1: 8 Pin M12 Connector, 303 Stainless Steel Shell, Single Channel Tachometer Input; Connector 2: 4 Pin LEMO® Connector, Chrome-Plated Copper Shell, Single Channel Acceleration Input; 6 ft. Length



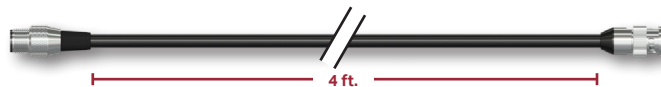
**D25476 | CB103-C563-002M-C613**

2 Conductor, Twisted, Shielded Pair Cable with Black Polyurethane Jacket, 0.245 in. (6 mm) OD, 250 °F (121 °C) Maximum Temperature; Connector 1: 8 Pin M12 Connector, 303 Stainless Steel Shell, Single Channel Tachometer Input; Connector 2: 4 Socket Amphenol Connector, Thermoplastic Shell, Single Channel Tachometer Input; 2 m Length



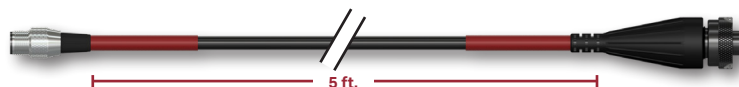
**D25479 | CB103-C585-004-F**

2 Conductor, Twisted, Shielded Pair Cable with Black Polyurethane Jacket, 0.245 in. (6 mm) OD, 250 °F (121 °C) Maximum Temperature; Connector 1: 8 Pin M12 Connector, 303 Stainless Steel Shell, Single Channel Voltage Input; Connector 2: BNC Plug Connector, Polycarbonate Overmolded; 4 ft. Length



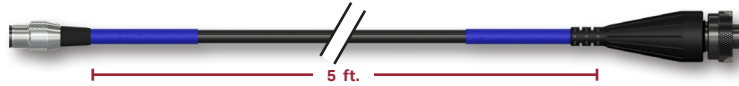
**D25480 | CB103-C555-005-D2C-RR**

2 Conductor, Twisted, Shielded Pair Cable with Black Polyurethane Jacket, 0.245 in. (6 mm) OD, 250 °F (121 °C) Maximum Temperature; Connector 1: 5 Pin M12 Connector, 303 Stainless Steel Shell, Single Channel Voltage Input; Connector 2: BNC Plug Connector, Polycarbonate Overmolded; 5 ft. Length, Red Heat Shrinks



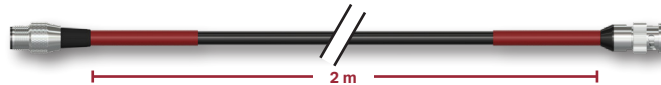
**D25481 | CB103-C579-005-D2C-BB**

2 Conductor, Twisted, Shielded Pair Cable with Black Polyurethane Jacket, 0.245 in. (6 mm) OD, 250 °F (121 °C) Maximum Temperature; Connector 1: 5 Pin M12 Connector, 303 Stainless Steel Shell, Channel "B" Acceleration Input; Connector 2: 2 Socket MIL-Spec Connector, Polyurethane Shell, Rubber Bending Strain Relief; 5 ft. Length, Blue Heat Shrinks



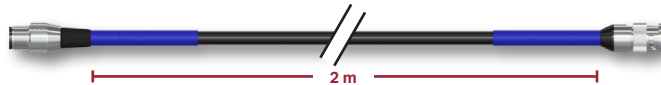
**D25483 | CB103-C555-002M-F-RR**

2 Conductor, Twisted, Shielded Pair Cable with Black Polyurethane Jacket, 0.245 in. (6 mm) OD, 250 °F (121 °C) Maximum Temperature; Connector 1: 5 Pin M12 Connector, Stainless Steel Shell, Channel "A" Acceleration Input; Connector 2: BNC Plug Connector, Polycarbonate Overmolded; 2 m. Length, Red Heat Shrinks



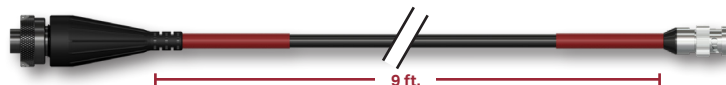
**D25484 | CB103-C579-002M-F-BB**

2 Conductor, Twisted, Shielded Pair Cable with Black Polyurethane Jacket, 0.245 in. (6 mm) OD, 250 °F (121 °C) Maximum Temperature; Connector 1: 5 Pin M12 Connector, 303 Stainless Steel Shell, Channel "B" Acceleration Input; Connector 2: BNC Plug Connector, Polycarbonate Overmolded; 2 m. Length, Blue Heat Shrinks



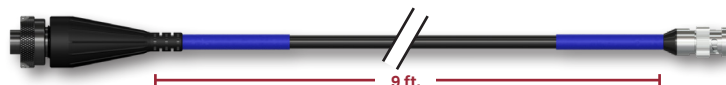
**D25485 | CB103-D2C-009-F-RR**

2 Conductor, Twisted, Shielded Pair Cable with Black Polyurethane Jacket, 0.245 in. (6 mm) OD, 250 °F (121 °C) Maximum Temperature; Connector 1: 2 Socket MIL-Spec Connector, Polyurethane Shell, Rubber Bending Strain Relief; Connector 2: BNC Plug Connector, Polycarbonate Overmolded; 9 ft. Length, Red Heat Shrinks



**D25486 | CB103-D2C-009-F-BB**

2 Conductor, Twisted, Shielded Pair Cable with Black Polyurethane Jacket, 0.245 in. (6 mm) OD, 250 °F (121 °C) Maximum Temperature; Connector 1: 2 Socket MIL-Spec Connector, Polyurethane Shell, Rubber Bending Strain Relief; Connector 2: BNC Plug Connector, Polycarbonate Overmolded; 9 ft. Length, Blue Heat Shrinks



**D25487 | CB103-D2C-009-F-WW**

2 Conductor, Twisted, Shielded Pair Cable with Black Polyurethane Jacket, 0.245 in. (6 mm) OD, 250 °F (121 °C) Maximum Temperature; Connector 1: 2 Socket MIL-Spec Connector, Polyurethane Shell, Rubber Bending Strain Relief; Connector 2: BNC Plug Connector, Polycarbonate Overmolded; 9 ft. Length, White Heat Shrinks



**D25488 | CB103-D2C-009-F**

2 Conductor, Twisted, Shielded Pair Cable with Black Polyurethane Jacket, 0.245 in. (6 mm) OD, 250 °F (121 °C) Maximum Temperature; Connector 1: 2 Socket MIL-Spec Connector, Polyurethane Shell, Rubber Bending Strain Relief; Connector 2: BNC Plug Connector, Polycarbonate Overmolded; 9 ft. Length



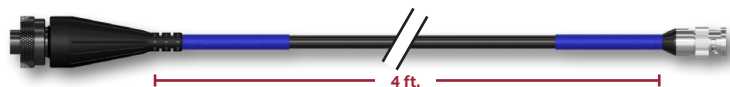
**D25489 | CB103-D2C-004-F-RR**

2 Conductor, Twisted, Shielded Pair Cable with Black Polyurethane Jacket, 0.245 in. (6 mm) OD, 250 °F (121 °C) Maximum Temperature; Connector 1: 2 Socket MIL-Spec Connector, Polyurethane Shell, Rubber Bending Strain Relief; Connector 2: BNC Plug Connector, Polycarbonate Overmolded; 4 ft. Length, Red Heat Shrinks



**D25490 | CB103-D2C-004-F-BB**

2 Conductor, Twisted, Shielded Pair Cable with Black Polyurethane Jacket, 0.245 in. (6 mm) OD, 250 °F (121 °C) Maximum Temperature; Connector 1: 2 Socket MIL-Spec Connector, Polyurethane Shell, Rubber Bending Strain Relief; Connector 2: BNC Plug Connector, Polycarbonate Overmolded; 4 ft. Length, Blue Heat Shrinks



**D25491 | CB103-D2C-004-F-WW**

2 Conductor, Twisted, Shielded Pair Cable with Black Polyurethane Jacket, 0.245 in. (6 mm) OD, 250 °F (121 °C) Maximum Temperature; Connector 1: 2 Socket MIL-Spec Connector, Polyurethane Shell, Rubber Bending Strain Relief; Connector 2: BNC Plug Connector, Polycarbonate Overmolded; 4 ft. Length, White Heat Shrinks



**D25492 | CB103-D2C-004-F**

2 Conductor, Twisted, Shielded Pair Cable with Black Polyurethane Jacket, 0.245 in. (6 mm) OD, 250 °F (121 °C) Maximum Temperature; Connector 1: 2 Socket MIL-Spec Connector, Polyurethane Shell, Rubber Bending Strain Relief; Connector 2: BNC Plug Connector, Polycarbonate Overmolded; 4 ft. Length



**D25499 | CB103-F-004-F**

2 Conductor, Twisted, Shielded Pair Cable with Black Polyurethane Jacket, 0.245 in. (6 mm) OD, 250 °F (121 °C) Maximum Temperature; Connector 1: BNC Plug Connector, Polycarbonate Overmolded; Connector 2: BNC Plug Connector, Polycarbonate Overmolded; 4 ft. Length



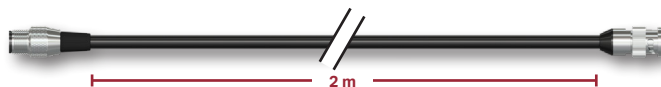
**D25500 | CB103-F-009-F**

2 Conductor, Twisted, Shielded Pair Cable with Black Polyurethane Jacket, 0.245 in. (6 mm) OD, 250 °F (121 °C) Maximum Temperature; Connector 1: BNC Plug Connector, Polycarbonate Overmolded; Connector 2: BNC Plug Connector, Polycarbonate Overmolded; 9 ft. Length



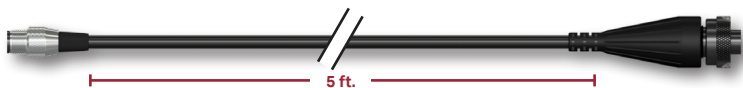
**D25525 | CB103-C558-002M-F**

2 Conductor, Twisted, Shielded Pair Cable with Black Polyurethane Jacket, 0.245 in. (6 mm) OD, 250 °F (121 °C) Maximum Temperature; Connector 1: 5 Pin M12 Connector, Stainless Steel Shell, Channel "D" Acceleration Input; Connector 2: BNC Plug Connector, Polycarbonate Overmolded; 2 m Length



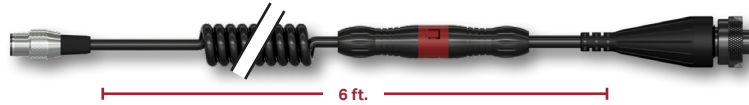
**D25526 | CB103-C558-005-D2C**

2 Conductor, Twisted, Shielded Pair Cable with Black Polyurethane Jacket, 0.245 in. (6 mm) OD, 250 °F (121 °C) Maximum Temperature; Connector 1: 5 Pin M12 Connector, Stainless Steel Shell, Channel "D" Acceleration Input; Connector 2: 2 Socket MIL-Spec Connector, Polyurethane Shell, Rubber Bending Strain Relief; 5 ft. Length



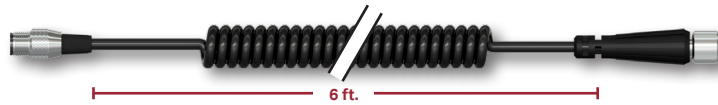
**D25543 | CB104-C555E-006-D2CE-SF**

2 Conductor, Coiled, Shielded Cable with Black Polyurethane Jacket, 0.21 in. (5.3 mm) OD, 250 °F (121 °C) Maximum Temperature; Connector 1: 5 Pin M12 Connector, Stainless Steel Shell, Channel "A" Acceleration Input; Connector 2: 2 Socket MIL-Spec Connector, Polyurethane Shell, Rubber Bending Strain Relief; 6 ft. Length; 3 Pin Breakaway Safety Feature, Nylon Shell



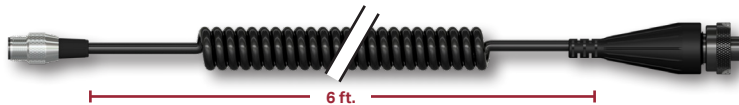
**D25777 | CB117-C614-006-C640**

4 Conductor, Coiled, Shielded Cable with Black Polyurethane Jacket, 0.21 in. (5.3 mm) OD, 250 °F (121 °C) Maximum Temperature; Connector 1: 5 Pin M12 Connector, 303 Stainless Steel Shell, Triaxial Acceleration Input; Connector 2: 5 Socket Dual Key Connector, Polyurethane Molded Shell; 6 ft. Length



**D25782 | CB104-C555E-006-D2CE**

2 Conductor, Coiled, Shielded Cable with Black Polyurethane Jacket, 0.21 in. (5.3 mm) OD, 250 °F (121 °C) Maximum Temperature; Connector 1: 5 Pin M12 Connector, Stainless Steel Shell, Channel "A" Acceleration Input; Connector 2: 2 Socket MIL-Spec Connector, Polyurethane Shell, Rubber Bending Strain Relief; 6 ft. Length



# DATA COLLECTOR CONNECTORS

## COMPATIBLE PART NUMBERS - DETAILED PRODUCT DESCRIPTIONS

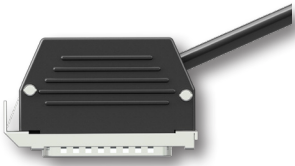
The following is a complete list of all Data Collector Connectors that are compatible with Emerson/CSI Data Collectors. They do not have an equivalent Emerson/CSI part number.

### Connectors Compatible with Legacy CSI 2120 Data Collectors:



#### C3

25 Pin Subminiature Connector, Thermoplastic Shell, Single Channel Acceleration Input, Pin 21: Signal/Power (+), Pin 24: Common (-)



#### C58

25 Pin Subminiature Connector, Thermoplastic Shell, Channel 1 Acceleration and Channel 2 PeakVue Input, Pin 21: Signal/Power (+), Pin 24: Common (-)

### Single-Axis Sensor Connectors Compatible with Emerson 2130/2140 Data Collectors:



#### C307

Reverse Keyed, 5 Pin M12 Connector, Nylon Shell, Single Channel Voltage Input, Pin 2: Signal/Power (+), Pin 5: Common (-)



#### C555

5 Pin M12 Connector, Stainless Steel Shell, Channel "A" Acceleration Input, Pin 2: Signal/Power (+), Pin 5: Common (-)



#### C555E

5 Pin M12 Connector, Stainless Steel Shell, Channel "A" Acceleration Input, Pin 2: Signal/Power (+), Pin 5: Common (-), Wired Specifically for Emerson Systems



#### C558

5 Pin M12 Connector, Stainless Steel Shell, Channel "D" Acceleration Input, Pin 1: Signal/Power (+), Pin 5: Common (-)



**C579**

5 Pin M12 Connector, Stainless Steel Shell, Channel "B" Acceleration Input, Pin 3: Acceleration/Power (+), Pin 5: Common (-)



**C585**

8 Pin M12 Connector, Stainless Steel Shell, Single Channel Voltage Input, Pin 1: Signal/Power (+), Pin 8: Common (-)

**Triaxial Sensor Connectors Compatible with Emerson 2130/2140 Data Collectors:**



**C560**

5 Pin M12 Connector, Stainless Steel Shell, Triaxial Acceleration Input, Pin 2: Y Axis, Pin 3: X Axis, Pin 4: Z Axis, Pin 5: Common (-)



**C561**

5 Pin M12 Connector, Stainless Steel Shell, Triaxial Acceleration Input, Pin 2: X Axis, Pin 3: Y Axis, Pin 4: Z Axis, Pin 5: Common (-)



**C562**

5 Pin M12 Connector, Stainless Steel Shell, Triaxial Acceleration Input, Pin 2: Z Axis, Pin 3: X Axis, Pin 4: Y Axis, Pin 5: Common (-)



**C580**

5 Pin M12 Connector, Stainless Steel Shell, Triaxial Acceleration Input, Pin 2: Z Axis, Pin 3: Y Axis, Pin 4: X Axis, Pin 5: Common (-)



**C610**

5 Pin M12 Connector, 303 Stainless Steel Shell, Triaxial Acceleration Input, Pin 2: Y Axis, Pin 3: Z Axis, Pin 4: X Axis, Pin 5: Common (-)



**C614**

5 Pin M12 Connector, Stainless Steel Shell, Triaxial Acceleration Input, Pin 2: X Axis, Pin 3: Z Axis, Pin 4: Y Axis, Pin 5: Common (-)



### **C640**

5 Socket Dual Key Connector, Polyurethane Molded Shell, Pin 1: Shield/Drain, Pin 2: X Axis Power/Signal, Pin 3: Y Axis Power/Signal, Pin 4: Z Axis Power/Signal, Pin 5: Common (-)

## ***Specialty and Tachometer/Speed Cable Connectors:***



### **C563**

8 Pin M12 Connector, 303 Stainless Steel Shell, Single Channel Tachometer Input, Pin 6: Tachometer/Power (+), Pin 7: Common (-), Compatible with CSI 404 Data Collector



### **C566**

8 Pin M12 Connector, 303 Stainless Steel Shell, Single Channel Tachometer Input, Pin 6: Tachometer/Power (+), Pin 7: Common (-), Compatible with Emerson 2140 Data Collector



### **C576**

8 Pin M12 Connector, 303 Stainless Steel Shell, Single Channel Tachometer Input, Pin 5: Common (-), Pin 7: Tachometer/Power (+), Compatible with Emerson 2140 Data Collector



### **C613**

4 Socket Amphenol Connector, Thermoplastic Shell, Single Channel Tachometer Input, Pin 1: Signal/Power (+), Pin 2: Shield/Drain, Pin 3: Common (-), 2k Ohm Resistor Tied Between Pins 1 and 3, Compatible with CSI 404 Data Collector

# GENERAL PURPOSE ADAPTERS

## COMPATIBLE PART NUMBERS - DETAILED PRODUCT DESCRIPTIONS

The following is a list of General Purpose Adapters that are compatible with Emerson/CSI Products. They do not have an equivalent Emerson/CSI part number.



### CB908-1A

2 Pin MIL (316L Stainless Steel) to BNC Plug Adapter (Nickel-Plated Brass), with Overmolded Reinforcement, 3.28 in. (83.3 mm) Length, 0.85 in. (21.6 mm) OD



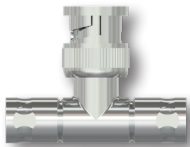
### CB909-1A

2 Pin MIL (316L Stainless Steel) to BNC Jack Adapter (Nickel-Plated Brass), with Overmolded Reinforcement, 3.36 in. (85.2 mm) Length, 0.85 in. (21.6 mm) OD



### CB910-1A

In-Line BNC Jack Adapter, Nickel-Plated Brass, 1.28 in. (32.6 mm) Length, 0.38 in. (9.6 mm) OD



### CB911-1A

BNC "T" Adapter, Nickel-Plated Zinc, 1.51 in. (38.4 mm) Length, 1.14 in. (28.9 mm) Height, Two 0.44 in. (11.1 mm) OD, One 0.54 in. (13.8 mm) OD



### CB911-3A

In-Line BNC Plug Adapter, Nickel-Plated Brass, 1.30 in. (33.0 mm) Length, 0.55 in. (13.8 mm) OD



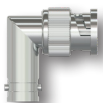
### CB912-1A

2 Socket MIL (Black Zinc Alloy) to BNC Plug Adapter (Nickel-Plated Brass), with Overmolded Reinforcement, 3.41 in. (86.6 mm) Length, 0.96 in. (24 mm) OD



### CB913-1A

2 Socket MIL (Black Zinc Alloy) to BNC Jack Adapter (Nickel-Plated Brass), with Overmolded Reinforcement, 3.49 in. (88.5 mm) Length, 0.96 in. (24 mm) OD

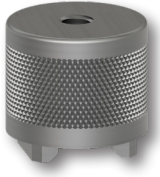


### CB919-1A

Right Angle BNC Connector Jack to Plug, Nickel-Plated Brass, 1.07 in. (27.1 mm) Length, 1.01 in. (25.7 mm) Height, One 0.38 in. (9.6 mm) OD, One 0.54 in. (13.8 mm) OD

# MOUNTING HARDWARE

## EQUIVALENT PART NUMBERS - DETAILED PRODUCT DESCRIPTIONS



### **A090835 | MH128-1A**

Multipurpose, 2 Rail Magnet Mounting Base, Neodymium Iron Boron in 303 Stainless Steel Case, 1/4-28 Blind Tapped Hole, 30 lbs. (14 kg) Pull Strength, 1.0 in. (25.4 mm) OD, 0.94 in. (23.88 mm) Height, 266 °F (130 °C) Maximum Temperature

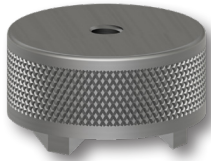


### **D24826 | MH130-1A**

Adhesive Mounting Disk, 17-4 Stainless Steel, 1/4-28 Blind Tapped Hole, 1.0 in. (25.4 mm) OD, 0.38 in. (9.5 mm) Height, Epoxy Sold Separately

## COMPATIBLE PART NUMBERS - DETAILED PRODUCT DESCRIPTIONS

The following is a list of General Purpose Mounting Hardware that is compatible with Emerson/CSI Sensors. They do not have an equivalent Emerson/CSI part number.



### **MH114-3A**

#### ***Most Popularly Used With Emerson's Wireless Sensor***

Multipurpose, 2 Rail Magnet Mounting Base, Neodymium Iron Boron in 303 Stainless Steel Case, 1/4-28 Blind Tapped Hole, 50 lbs. (23 kg) Pull Strength, 1.40 in. (35.56 mm) OD, 0.75 in. (19 mm) Height, 266 °F (130 °C) Maximum Temperature

# VIBENAVIGATOR™ DATA COLLECTION EXTENSION POLE

## DETAILED PRODUCT DESCRIPTION

### For Use with A0643TX | VN1000-XC

Available in Three Overall Lengths: 4 ft. (1.2 m), 8 ft. (2.4 m) and 12 ft. (3.7 m); Integrated Safety Feature Design Ensures Quick Disconnection of the Pole from the Data Collector Cable in the Event of an Emergency; Internally Routed Cable for Improved Analyst Safety; Sensor and Mating Cable are Sold Separately

