



CONNECTION TECHNOLOGY CENTER, INC.

SKF ONLINE MONITORING COMPATIBLE VIBRATION ANALYSIS HARDWARE

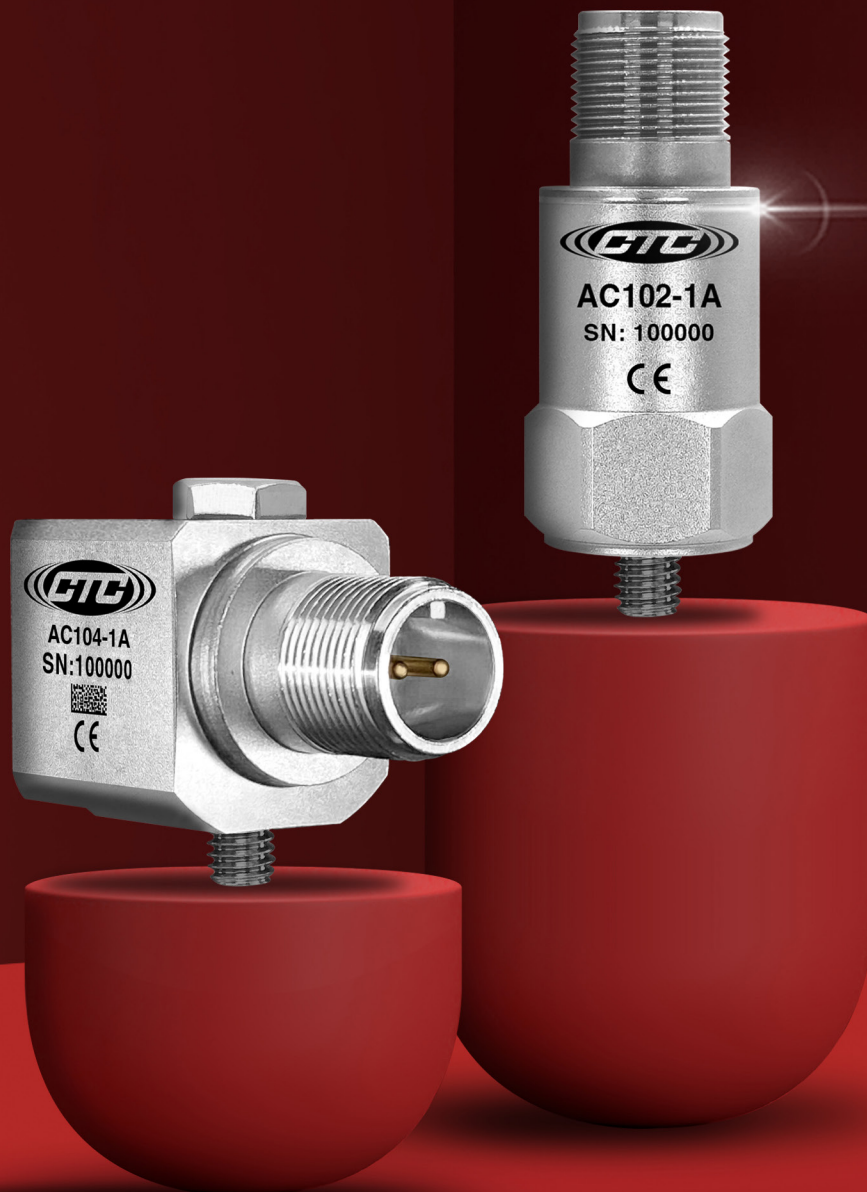


Table of Contents

- Accelerometers 2
- Accelerometers with Mounting Hardware 4
- Integral Cable Accelerometers with Mounting Hardware 5
- Cable Assemblies..... 7
- Connector Kits 8
- Cable and Connector Accessories..... 8
- Mounting Hardware 9

CTC offers a wide selection of the industry's most dependable vibration analysis hardware engineered for seamless compatibility with SKF online monitoring solutions. Enhance your existing online monitoring system with the unmatched power and precision of CTC hardware solutions.

Accelerometers

Featuring superior shear mode construction, welded hermetic seal, and durable 316L stainless steel case for the industry's best performance in the most demanding environments. Scan or click the QR codes to view CTC accelerometers on our website:

SKF: CMSS 780C
CTC: AC192-1D



SKF: CMSS 780C-M8
CTC: M8/AC192-1D



SKF: CMSS 786A-D2
CTC: AC935-1A
(Sensitivity tolerance: SKF $\pm 5\%$ / CTC $\pm 10\%$)



SKF: CMSS 786A-IS
CTC: AC915-1A



SKF: CMSS 787A-IS
CTC: AC916-1A
(Sensitivity tolerance: SKF $\pm 5\%$ / CTC $\pm 10\%$)



SKF: CMSS 787A-M8-IS
CTC: AC968-1A
(Sensitivity tolerance: SKF $\pm 5\%$ / CTC $\pm 10\%$)



SKF: CMSS 792-EE
CTC: AC915-1A
(Sensitivity tolerance: SKF $\pm 5\%$ / CTC $\pm 10\%$)



SKF: CMSS 793-CA
CTC: AC935-1A
(Sensitivity tolerance: SKF $\pm 5\%$ / CTC $\pm 10\%$)



SKF: CMSS 793L
CTC: AC233-1A



SKF: CMSS 793V-CA
CTC: VE901-1A



SKF: CMSS 793V-EE
CTC: VE901-1A



SKF: CMSS 797-CA
CTC: AC916-1A
(Sensitivity tolerance: SKF $\pm 5\%$ / CTC $\pm 10\%$)



SKF: CMSS 797-EE

CTC: AC916-1A

(Sensitivity tolerance: SKF $\pm 5\%$ / CTC $\pm 10\%$)



SKF: CMSS 797L

CTC: AC234-1A



SKF: CMSS 797T-1

CTC: TA203-1A



SKF: CMSS 2200-M8

CTC: AC184-1A



SKF: CMSS WIND-100-10

CTC: M/MEB361-2A/010M-Z



SKF: CMSS WIND-100-15

CTC: M/MEB361-2A/015M-Z



SKF: CMSS WIND-100-20

CTC: M/MEB361-2A/020M-Z



Accelerometers with Mounting Hardware

Convenient solutions featuring a CTC industrial accelerometer paired with rugged, compatible mounting hardware for online monitoring applications. Scan or click the QR codes to view CTC accelerometers and mounting hardware on our website:

SKF: CMSS 786T-IS

CTC: TA915-1A + MH108-6B



TA915-1A
accelerometer



MH108-6B
mounting adapter stud

SKF: CMSS 793T-3

CTC: TA201-1A + MH108-5B



TA201-1A
accelerometer



MH108-5B
mounting adapter stud

SKF: CMSS 2100

CTC: AC202-1A + MH108-6B



AC202-1A
accelerometer



MH108-6B
mounting adapter stud

SKF: CMSS 2100T

CTC: TA202-1A + MH108-6B



TA202-1A
accelerometer



MH108-6B
mounting adapter stud

SKF: CMSS 2106

CTC: AC207-1D + MH108-6B



AC207-1D
accelerometer



MH108-6B
mounting adapter stud

SKF: CMSS 2200

CTC: AC104-1A + MH108-10B



AC104-1A
accelerometer



MH108-10B
captive bolt

SKF: CMSS 2200T

CTC: TA204-1A + MH108-10B



TA204-1A
accelerometer



MH108-10B
captive bolt

SKF: CMSS 2207

CTC: AC208-1D + MH108-10B



AC208-1D
accelerometer



MH108-10B
captive bolt

Integral Cable Accelerometers with Mounting Hardware

Convenient all-in-one solutions featuring a CTC industrial accelerometer with durable integral cable paired with rugged, compatible mounting hardware for online monitoring applications. Scan or click the QR codes to view CTC integral cable accelerometers and mounting hardware on our website:

SKF: CMPT 2310

CTC: AC104-6N/005M-Z + MH108-10B



AC104-6N
integral cable
accelerometer



MH108-10B
captive bolt

SKF: CMPT 2310 ACTX15

CTC: TA916-2C/015M-Z + MH108-10B



TA916-2C
integral cable
accelerometer



MH108-10B
captive bolt

SKF: CMPT 2310AC

CTC: AC916-2C/005M-Z + MH108-10B



AC916-2C
integral cable
accelerometer



MH108-10B
captive bolt

SKF: CMPT 2310ACT

CTC: TA916-2C/005M-Z + MH108-10B



TA916-2C
integral cable
accelerometer



MH108-10B
captive bolt

SKF: CMPT 2310ACTX10

CTC: TA916-2C/010M-Z + MH108-10B



TA916-2C
integral cable
accelerometer



MH108-10B
captive bolt

SKF: CMPT 2310ACX10

CTC: AC916-2C/010M-Z + MH108-10B



AC916-2C
integral cable
accelerometer



MH108-10B
captive bolt

SKF: CMPT 2310ACX15

CTC: AC916-2C/015M-Z + MH108-10B



AC916-2C
integral cable
accelerometer



MH108-10B
captive bolt

SKF: CMPT 2310T

CTC: TA204-6N/005M-Z + MH108-10B



TA204-6N
integral cable
accelerometer



MH108-10B
captive bolt

SKF: CMPT 2310X10

CTC: AC104-6N/010M-Z + MH108-10B



AC104-6N
integral cable
accelerometer



MH108-10B
captive bolt

SKF: CMPT 2310X10

CTC: TA204-6N/010M-Z + MH108-10B



TA204-6N
integral cable
accelerometer



MH108-10B
captive bolt

SKF: CMPT 2310X15

CTC: AC104-6N/015M-Z + MH108-10B



AC104-6N
integral cable
accelerometer



MH108-10B
captive bolt

SKF: CMPT 2310X20

CTC: AC104-6N/020M-Z + MH108-10B



AC104-6N
integral cable
accelerometer



MH108-10B
captive bolt

SKF: CMPT 2310X20

CTC: TA204-6N/020M-Z + MH108-10B



TA204-6N
integral cable
accelerometer



MH108-10B
captive bolt

SKF: CMSS 2100F

CTC: AC102-2C/005M-Z + MH108-6B



AC102-2C
integral cable
accelerometer



MH108-6B
adapter stud

SKF: CMSS 2100F-33

CTC: AC102-2C/010M-Z + MH108-6B



AC102-2C
integral cable
accelerometer



MH108-6B
adapter stud

SKF: CMSS 2100F-66

CTC: AC102-2C/020M-Z + MH108-6B



AC102-2C
integral cable
accelerometer



MH108-6B
adapter stud

SKF: CMSS 2110

CTC: AC102-6N/005M-Z + MH108-6B



AC102-2C
integral cable
accelerometer



MH108-6B
adapter stud

SKF: CMSS 2110-33

CTC: AC102-6N/010M-Z + MH108-6B



AC102-2C
integral cable
accelerometer



MH108-6B
adapter stud

Cable Assemblies

Engineered for low noise, high mechanical strength, and built to withstand long-term use in demanding online monitoring applications. Looking to change the length of your assembly? Use our Custom Cable Wizard to customize your perfect cable. Scan or click the QR codes to view CTC cables and connectors on our website:

SKF: CMSS 942-LCI-SY-05M

CTC: CB111-A2AG-005M-Z



CB111 cable



A2AG connector



Z termination

SKF: CMSS 942-LCI-SY-10M

CTC: CB111-A2AG-010M-Z



CB111 cable



A2AG connector



Z termination

SKF: CMSS 942-LCI-SY-20M

CTC: CB111-A2AG-015M-Z



CB111 cable



A2AG connector



Z termination

SKF: CMSS 942-LCN-SY-05M

CTC: CB111-A2A-005M-Z



CB111 cable



A2A connector



Z termination

SKF: CMSS 942-LCN-SY-10M

CTC: CB111-A2A-010M-Z



CB111 cable



A2A connector



Z termination

SKF: CMSS 942-LCN-SY-20M

CTC: CB111-A2A-015M-Z



CB111 cable



A2A connector



Z termination

SKF: CMSS 942-SB-150M

CTC: CB193-Z-150M-Z



CB193 cable



Z termination

SKF: CMSS 942-SY-150M

CTC: CB111-Z-150M-Z



CB111 cable



Z termination

SKF: CMSS 943-LCI-SY-05M

CTC: CB112-A3AG-005M-Z



CB112 cable



A3AG connector



Z termination

SKF: CMSS 943-LCI-SY-10M

CTC: CB112-A3AG-010M-Z



CB112 cable



A3AG connector



Z termination

SKF: CMSS 943-LCI-SY-15M
CTC: CB112-A3AG-015M-Z



CB112 cable



A3AG connector



Z termination

SKF: CMSS 943-SB-150
CTC: CB191-Z-150M-Z



CB191 cable



Z termination

SKF: CMSS 943-SY-150M
CTC: CB112-Z-150M-Z



CB112 cable



Z termination

Connector Kits

Field-installable solutions that allow you to create your own cordsets. Kits come with a complete set of components including connector insert, sockets, and backshell to install on your desired cabling. Scan or click the QR codes to view CTC connector kits on our website:

SKF: CMSS 942-TL-05
CTC: CK-V2A (qty: 5)



Cable entry diameter:
0.190 in. (4.83 mm)

SKF: CMSS 943-TL-05
CTC: CK-V3A (qty: 5)



Cable entry diameter:
0.190 in. (4.83 mm)

Cable and Connector Accessories

Designed for efficient cable and connector installation for long-lasting performance in online monitoring applications. Scan or click the QR codes to view CTC cable and connector accessories on our website:

SKF: CMSS 940-K
CTC: CB926-1A + CB934-1A + MH109-3D



CB926-1A
crimp tool



CB934-1A
cable stripper



MH109-3D
epoxy kit

Mounting Hardware

Ensures accurate and consistent vibration data collection in online monitoring applications. Scan or click the QR codes to view CTC mounting hardware on our website:

SKF: CMAC 230
CTC: MH108-1B



mounting stud

SKF: CMAC 231
CTC: MH108-6B



adapter stud

SKF: CMAC 232-05
CTC: MH108-5B



adapter stud

SKF: CMSS 30205300
CTC: MH108-3B



adapter stud

SKF: CMSS 910M-05
CTC: MH108-1B



mounting stud

SKF: CMSS 910F
CTC: MH130-1A



mounting disk

SKF: CMSS 910QDB1
CTC: MH107-1A



quick disconnect receptacle

SKF: CMSS 910QDP1
CTC: MH107-2B



quick disconnect stud

SKF: CMSS 910QDP2
CTC: MH107-1B



quick disconnect stud

SKF: CMSS 908-MD
CTC: MH114-3A



mounting magnet

SKF: CMSS-WIND-201
CTC: MH108-43B



mounting stud