

# **GTC** **CONNECT**

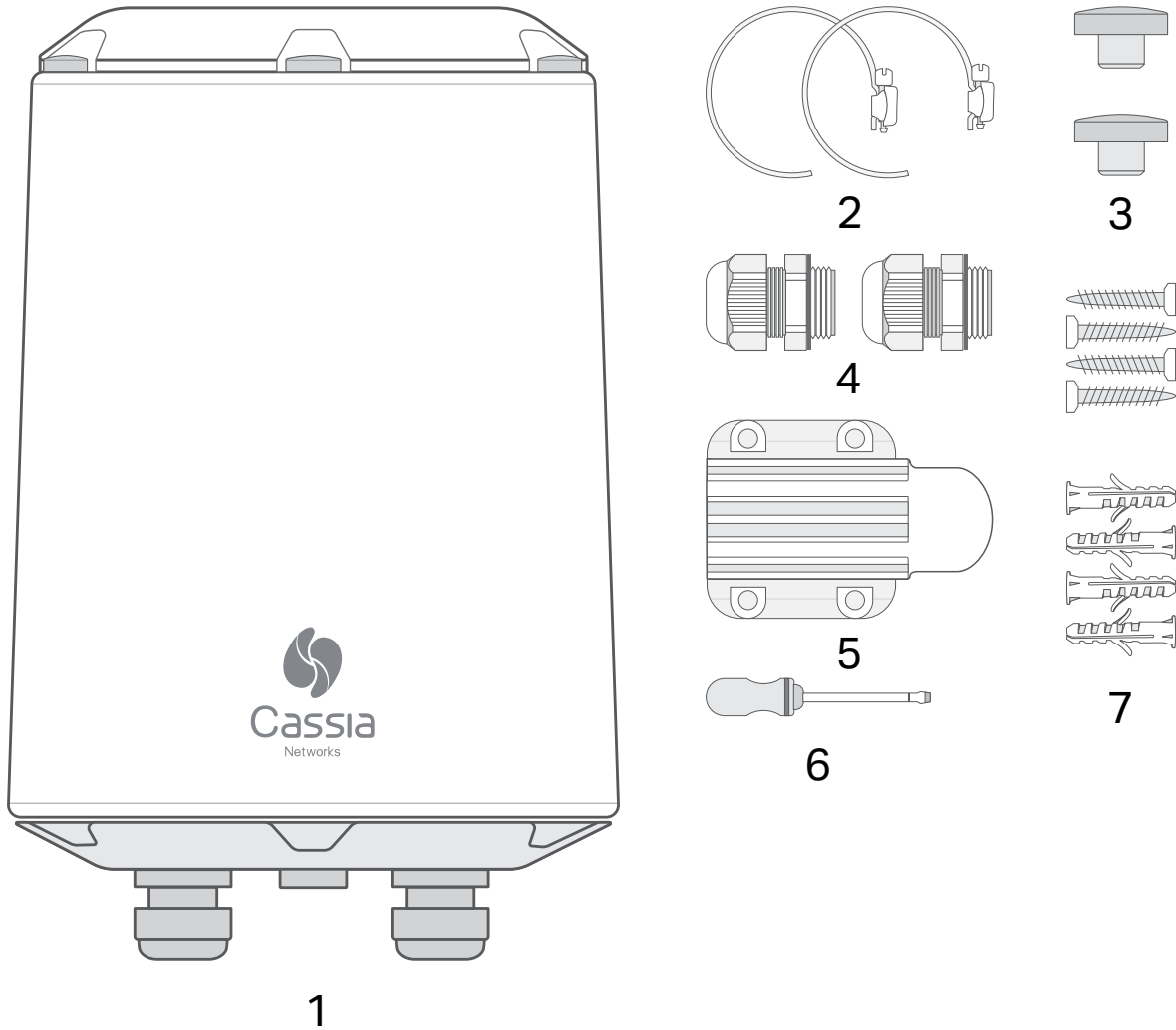


## **ACCESS2000 Network Controller & Wireless Gateway Product Manual**

## TABLE OF CONTENTS

- Included in Package ..... 3
- Head & Base ..... 4
- Mounting & Installation ..... 5
- Setup Bluetooth Router ..... 8
- Product Interface ..... 9
- Power ..... 9
- Environmental ..... 9
- Federal Communications Commission (FCC) Interference Statement ..... 9
- RF Exposure Warning ..... 10

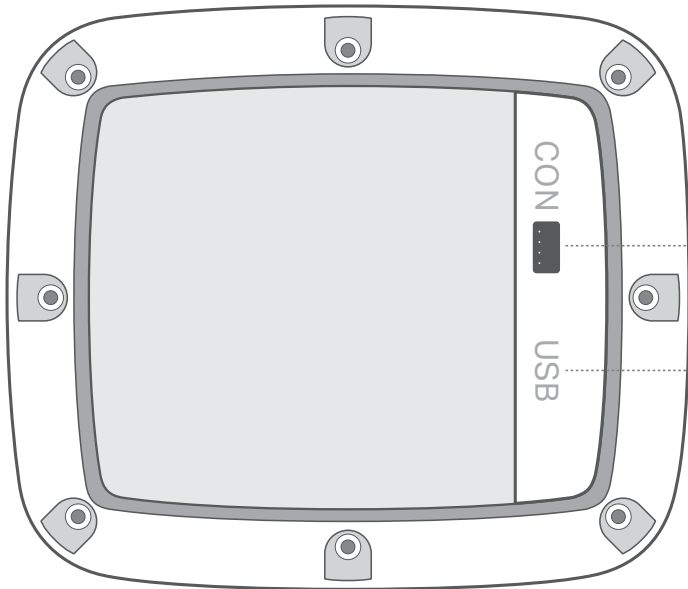
## I. INCLUDED IN PACKAGE



- 1. ACCESS2000 Router (1)
- 2. Pole Mounting Straps (2)
- 3. Extra Top Screw Covers (2)
- 4. Cable Glands (2)
- 5. Mounting Bracket (1)
- 6. Slotted Screwdriver (1)\*
- 7. Anchors with Screws (2\*4)

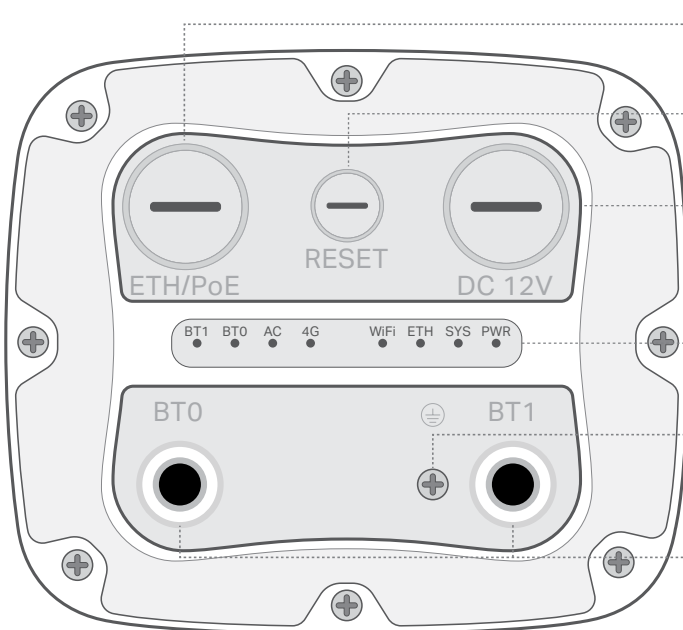
\*Only for removing the Ethernet cable (depress the plastic release tab)

## II. HEAD & BASE



• Not used

• USB 2.0



• Ethernet and PoE

• Reset

• 12V DC

• LED Lights

• Ground

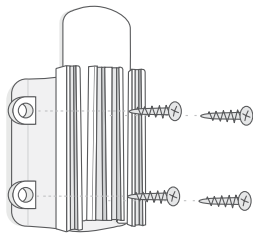
• Opt. external Bluetooth antenna connectors

### III. MOUNTING & INSTALLATION

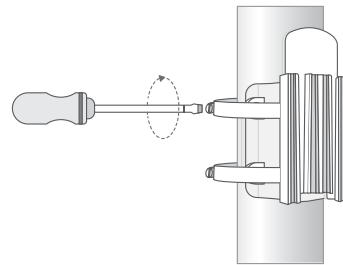
1. Mount the ACCESS2000 mounting bracket in a vertical orientation onto a wall or pole with the supplied mounting kit

**NOTE:** The side of the mounting bracket facing the wall and pole is sharp. Please don't hurt your hands.

Wall Mount

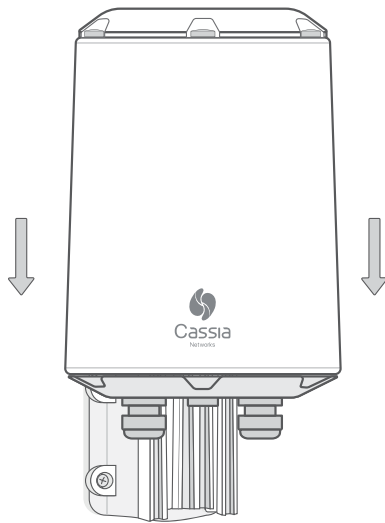


Pole Mount

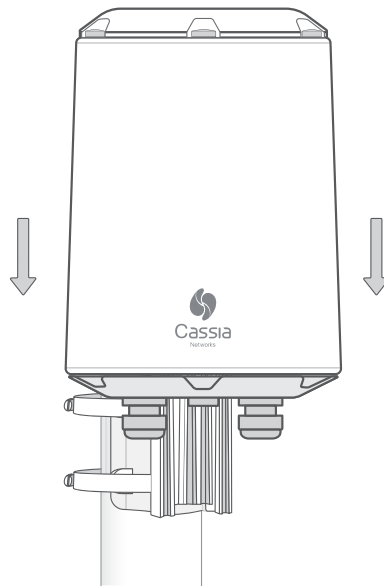


2. Slide ACCESS2000 down on the ACCESS2000 mounting bracket

Wall Mount



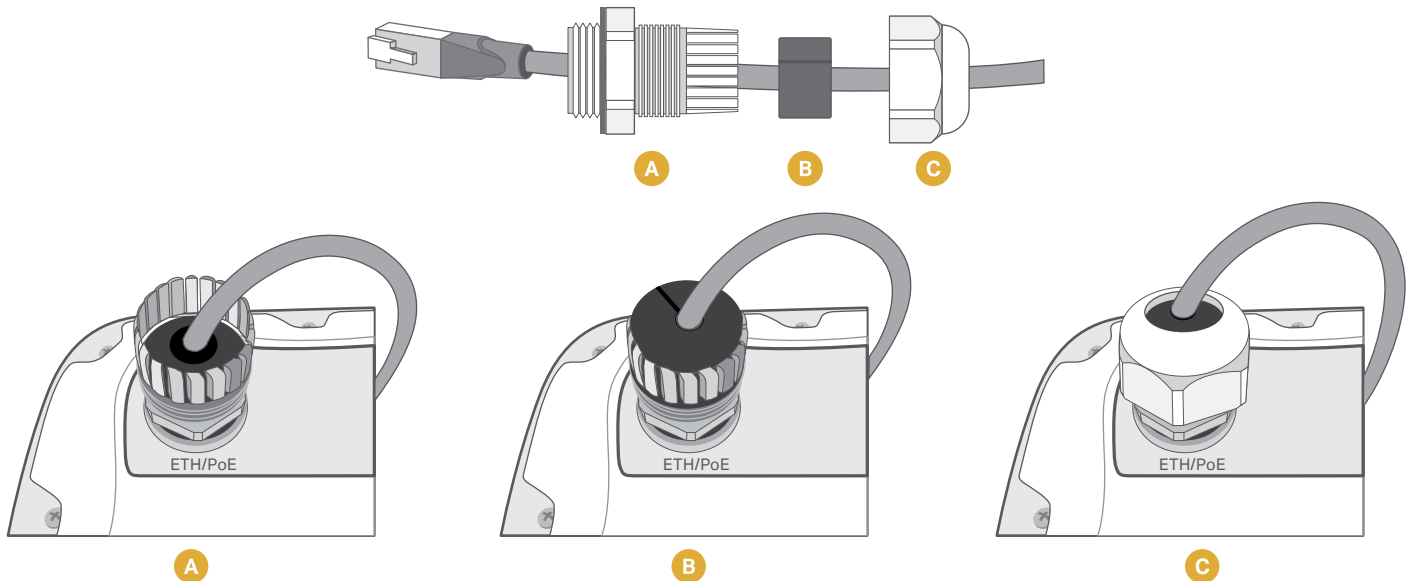
Pole Mount



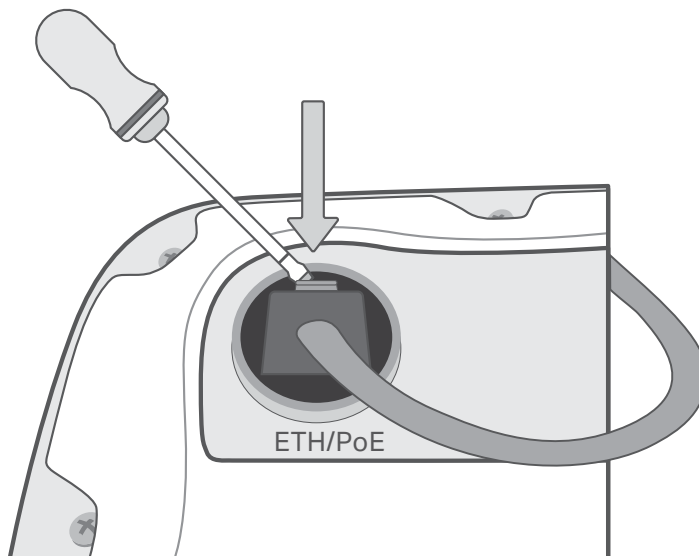
3. Connect Ethernet cable and PoE

Remove the ETH/PoE plug (M22X1.5), pass the Ethernet cable through the cable gland, insert the RJ-45 connector into the Ethernet port of ACCESS2000, and tighten the cable gland in the order of a, b, c. The torque of step c should be less than the torque of step a.

**NOTE:** When removing the cable gland, please follow the order of c, b, a. Otherwise ACCESS2000 will be damaged.

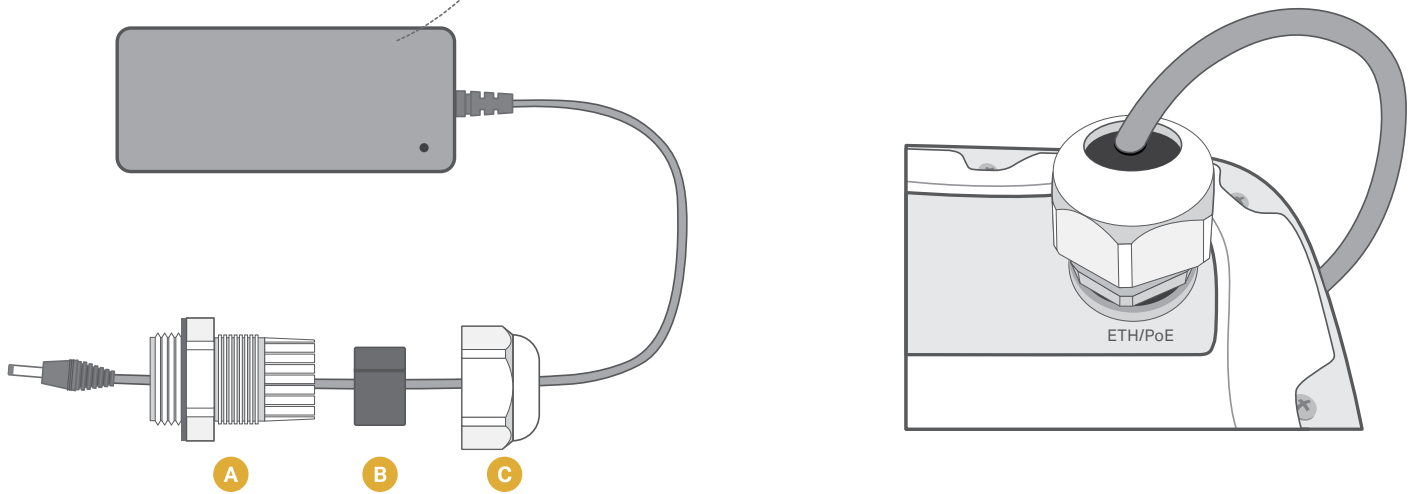


**NOTE:** In order to remove the Ethernet cable once it's been installed, please use the supplied screwdriver in the ACCESS2000 box or a small pointed tool of your choosing to depress the plastic release tab on the cable. See image below.

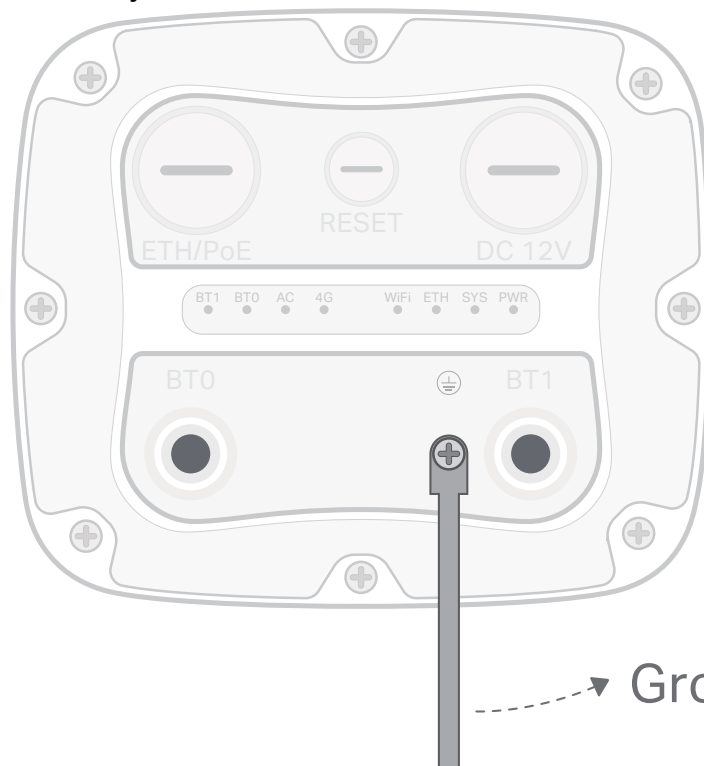


4. Connect 12V DC power cable and cable gland to ACCESS2000 in the same way as step 4

DC power adapter



5. For outdoor ACCESS2000 installations, please connect the ground cable to ensure ACCESS2000's safety



Ground Cable

## IV. SETUP BLUETOOTH ROUTER

### 1. Power On the Gateway

Using either:

- a. **Power over Ethernet (PoE)**
- b. **A 12V power adapter**

Allow approximately 3 minutes for the gateway to fully boot.

### 2. Connect to the Gateway WiFi

Once powered on, the gateway will broadcast a WiFi network.

From your computer or laptop, connect to the network named **cassia-XXXXXX** (where XXXXXX represents the last six characters of the gateway's MAC address).

### 3. Open the Configuration Page

After connecting to the gateway's WiFi, open a web browser and navigate to **http://192.168.40.1**

### 4. Identify the Gateway IP Address

Navigate to the Status tab

You will see multiple IP addresses listed:

- a. **ETH IP** - Use this if the gateway is connected via Ethernet
- b. **WLAN IP** - Use this if the gateway is connected via WiFi

Make note of the IP address relevant to your connection method.

### 5. Configure WiFi (Optional)

Skip this step if you are using Ethernet.

- a. Go to the **Basic** tab
- b. Locate **Connection Priority** near the top of the page
- c. Set the connection priority to **WiFi**
- d. Scroll down to the **WiFi Client** section
- e. Enable the WiFi Client
- f. Enter your wireless network credentials
- g. Click **Apply** to save the configuration

The gateway will now connect to your wireless network.

### 6. Reconnect to Your Network

Disconnect from the gateway's WiFi (cassia-XXXXXX).

Reconnect your computer to your normal network (Ethernet or WiFi).

## 7. Access the Gateway User Interface

Open a web browser and navigate to **http://<gateway-ip>:60001**

Replace <gateway-ip> with the **ETH IP** or **WLAN IP** identified earlier.

The gateway user interface should now load.

## V. PRODUCT INTERFACE

Bluetooth Low Energy: 4.0/4.1/4.2/5.0

Wi-Fi: 802.11 a/b/g/n/ac, 2.4GHz and 5GHz ISM band Ethernet: 10/100 Base-T

USB 2.0: supports USB cellular modem

Opt. external Bluetooth antenna connectors: 50 Ω N type female connector

Reset button: Factory reset. Please remove the reset plug (M12X1.5) first

LED lights: BT/AC/4G/Wi-Fi/Ethernet/System/Power

## VI. POWER

Power over Ethernet: 802.3af/at compliant source Optional: 12V DC power adapter [1]

**NOTE:** Please don't use two power sources at the same time

## VII. ENVIRONMENTAL

Operating temperature: -40°C to +65°C (-40°F to +149°F)

Humidity: 0% to 90% non-condensing

Storage and transportation temperature: -50°C to +70°C (-58°F to +158°F)

Wind resistance: up to 85-MPH sustained winds & 135-MPH gusts

IP rating: IP66

For additional assistance, please email: [support@cassianetworks.com](mailto:support@cassianetworks.com)

[1] Connector type: Interior diameter 2.5 mm / outside diameter 5.5 mm, center +v / outer -v

Output voltage: 12V

Output power: Equal or larger than 12 W

## VIII. FEDERAL COMMUNICATIONS COMMISSION (FCC) INTERFERENCE STATEMENT

This equipment has been tested and found to comply with the limits for a Class B digital device, pursuant to part 15 of the FCC Rules. These limits are designed to provide reasonable protection against harmful interference in a residential installation. This equipment generates, uses and can radiate radio frequency energy and, if not installed and used in accordance with the instructions, may cause harmful interference to radio communications.



However, there is no guarantee that interference will not occur in a particular installation. If this equipment does cause harmful interference to radio or television reception, which can be determined by turning the equipment off and on, the user is encouraged to try to correct the interference by one or more of the following measures:

- Reorient or relocate the receiving antenna.
- Increase the separation between the equipment and receiver.
- Connect the equipment into an outlet on a circuit different from that to which the receiver is connected.
- Consult the dealer or an experienced radio/TV technician for help.

**NOTE:** Any changes or modifications not expressly approved by the party responsible for compliance could void the user’s authority to operate the equipment.

For additional information, please go to: <https://www.cassianetworks.com>

## IX. RF EXPOSURE WARNING

This equipment must be installed and operated in accordance with provided instructions and the antenna(s) used for this transmitter must be installed to provide a separation distance of at least 20 cm from all persons and must not be co-located or operating in conjunction with any other antenna or transmitter.

End-users and installers must be provided with antenna installation instructions and transmitter operating conditions for satisfying RF exposure compliance.

### Need Additional Technical Support?

Need additional technical support for issues or questions about the Connect Wireless ecosystem?

Scan the QR code or use the hyperlink to access our convenient web form to submit your request online at any time.

CTC’s experienced support team will review your inquiry and work quickly to resolve your issues.



*scan QR code or*

**CLICK HERE FOR  
SUPPORT REQUEST FORM**

The Bluetooth® word mark and logos are registered trademarks owned by Bluetooth SIG, Inc. and any use of such marks by Connection Technology Center, Inc. (CTC) is under license. Other trademarks and trade names are those of their respective owners.

